



SZABO SCANDIC

Part of Europa Biosite

Produktinformation



Forschungsprodukte & Biochemikalien



Zellkultur & Verbrauchsmaterial



Diagnostik & molekulare Diagnostik



Laborgeräte & Service

Weitere Information auf den folgenden Seiten!
See the following pages for more information!



Lieferung & Zahlungsart

siehe unsere [Liefer- und Versandbedingungen](#)

Zuschläge

- Mindermengenzuschlag
- Trockeneiszuschlag
- Gefahrgutzuschlag
- Expressversand

SZABO-SCANDIC HandelsgmbH

Quellenstraße 110, A-1100 Wien

T. +43(0)1 489 3961-0

F. +43(0)1 489 3961-7

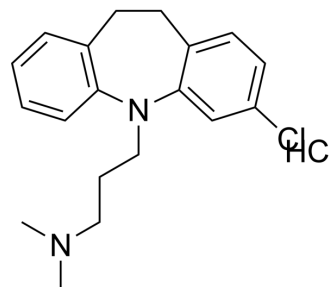
mail@szabo-scandic.com

www.szabo-scandic.com

[linkedin.com/company/szaboscandic](https://www.linkedin.com/company/szaboscandic) 

Clomipramine hydrochloride (Standard)

Cat. No.:	HY-B0457R
CAS No.:	17321-77-6
Molecular Formula:	C ₁₉ H ₂₄ Cl ₂ N ₂
Molecular Weight:	351.31
Target:	Serotonin Transporter
Pathway:	Neuronal Signaling
Storage:	Please store the product under the recommended conditions in the Certificate of Analysis.



BIOLOGICAL ACTIVITY

Description

Clomipramine (hydrochloride) (Standard) is the analytical standard of Clomipramine (hydrochloride). This product is intended for research and analytical applications. Clomipramine (Chlorimipramine) hydrochloride is a potent 5-HT reuptake blocker with the IC₅₀ value of 1.5 nM. Clomipramine hydrochloride is a tricyclic antidepressant that can be used for the research of depression and obsessive compulsive disorder (OCD)^[1].

REFERENCES

- [1]. Yumi Sugimoto, et al. The tricyclic antidepressant Clomipramine increases plasma glucose levels of mice. *J Pharmacol Sci.* 2003 Sep;93(1):74-9.
- [2]. Mushtaq Ahmed, et al. Comparative study of the inhibitory effect of antidepressants on cholinesterase activity in Bungarus sindanus (krait) venom, human serum and rat striatum. *J Enzyme Inhib Med Chem.* 2008 Dec;23(6):912-7.
- [3]. Federica Cavaliere, The tricyclic antidepressant Clomipramine inhibits neuronal autophagic flux. *Sci Rep.* 2019 Mar 19;9(1):4881.

Caution: Product has not been fully validated for medical applications. For research use only.

Tel: 609-228-6898

Fax: 609-228-5909

E-mail: tech@MedChemExpress.com

Address: 1 Deer Park Dr, Suite Q, Monmouth Junction, NJ 08852, USA