



SZABO SCANDIC

Part of Europa Biosite

Produktinformation



Forschungsprodukte & Biochemikalien



Zellkultur & Verbrauchsmaterial



Diagnostik & molekulare Diagnostik



Laborgeräte & Service

Weitere Information auf den folgenden Seiten!
See the following pages for more information!



Lieferung & Zahlungsart

siehe unsere [Liefer- und Versandbedingungen](#)

Zuschläge

- Mindermengenzuschlag
- Trockeneiszuschlag
- Gefahrgutzuschlag
- Expressversand

SZABO-SCANDIC HandelsgmbH

Quellenstraße 110, A-1100 Wien

T. +43(0)1 489 3961-0

F. +43(0)1 489 3961-7

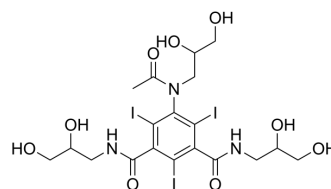
mail@szabo-scandic.com

www.szabo-scandic.com

[linkedin.com/company/szaboscandic](https://www.linkedin.com/company/szaboscandic) 

Iohexol (Standard)

Cat. No.:	HY-B0594R
CAS No.:	66108-95-0
Molecular Formula:	C ₁₉ H ₂₆ I ₃ N ₃ O ₉
Molecular Weight:	821.14
Target:	Mitophagy; Autophagy
Pathway:	Autophagy
Storage:	Please store the product under the recommended conditions in the Certificate of Analysis.



BIOLOGICAL ACTIVITY

Description

Iohexol (Standard) is the analytical standard of Iohexol. This product is intended for research and analytical applications. Iohexol is a non-ionic, water-soluble contrast agent used as a reference marker for the determination of glomerular filtration rate (GFR) at the level of renal function. Iohexol can be used for contrast in myelography, computerized tomography (cisternography, ventriculography) and MicroCT imaging^{[1][2]}.

REFERENCES

- [1]. Hainfeld JF, Ridwan SM, Stanishevskiy Y, Smilowitz NR, Davis J, Smilowitz HM. Small, Long Blood Half-Life Iodine Nanoparticle for Vascular and Tumor Imaging. *Sci Rep*. 2018 Sep 14;8(1):13803.
- [2]. Soman RS, et al. Development and validation of an HPLC-UV method for determination of Iohexol in human plasma. *J Chromatogr B Analyt Technol Biomed Life Sci*. 2005 Feb 25;816(1-2):339-43.
- [3]. Jensen H, et al. The effects of the iodinated X-ray contrast media iodixanol, Iohexol, Iopromide, and Ioversol on the rat kidney epithelial cell line NRK 52-E. *Ren Fail*. 2011;33(4):426-33.
- [4]. Klenner S, et al. Estimation of intestinal permeability in healthy dogs using the contrast medium Iohexol. *Vet Clin Pathol*. 2009 Sep;38(3):353-60.
- [5]. Baklouti S, et al. Population Pharmacokinetic Model of Iohexol in Dogs to Estimate Glomerular Filtration Rate and Optimize Sampling Time. *Front Pharmacol*. 2021 Apr 29;12:634404.

Caution: Product has not been fully validated for medical applications. For research use only.

Tel: 609-228-6898

Fax: 609-228-5909

E-mail: tech@MedChemExpress.com

Address: 1 Deer Park Dr, Suite Q, Monmouth Junction, NJ 08852, USA