



# SZABO SCANDIC

Part of Europa Biosite

## Produktinformation



Forschungsprodukte & Biochemikalien



Zellkultur & Verbrauchsmaterial



Diagnostik & molekulare Diagnostik



Laborgeräte & Service

Weitere Information auf den folgenden Seiten!  
See the following pages for more information!



### Lieferung & Zahlungsart

siehe unsere [Liefer- und Versandbedingungen](#)

### Zuschläge

- Mindermengenzuschlag
- Trockeneiszuschlag
- Gefahrgutzuschlag
- Expressversand

### SZABO-SCANDIC HandelsgmbH

Quellenstraße 110, A-1100 Wien

T. +43(0)1 489 3961-0

F. +43(0)1 489 3961-7

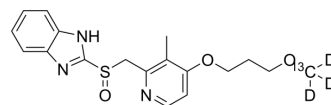
[mail@szabo-scandic.com](mailto:mail@szabo-scandic.com)

[www.szabo-scandic.com](http://www.szabo-scandic.com)

[linkedin.com/company/szaboscandic](https://www.linkedin.com/company/szaboscandic) 

## Rabeprazole-<sup>13</sup>C,<sub>3</sub>D<sub>3</sub>

<b>Cat. No.:</b>	HY-B0656S1
<b>CAS No.:</b>	1261392-48-6
<b>Molecular Formula:</b>	C <sub>17</sub> <sup>13</sup> CH <sub>18</sub> D <sub>3</sub> N <sub>3</sub> O <sub>3</sub> S
<b>Molecular Weight:</b>	363.45
<b>Target:</b>	Proton Pump; Bacterial; Apoptosis; Isotope-Labeled Compounds
<b>Pathway:</b>	Membrane Transporter/Ion Channel; Anti-infection; Apoptosis; Others
<b>Storage:</b>	Please store the product under the recommended conditions in the Certificate of Analysis.



### BIOLOGICAL ACTIVITY

<b>Description</b>	Rabeprazole-13C, <sub>3</sub> D <sub>3</sub> is a deuterated labeled Rabeprazole <sup>[1]</sup> . Rabeprazole (LY307640) is a second-generation proton pump inhibitor (PPI) that irreversibly inactivates gastric H <sup>+</sup> /K <sup>+</sup> -ATPase. Rabeprazole induces apoptosis. Rabeprazole acts as an uridine nucleoside ribohydrolase (UNH) inhibitor with an IC <sub>50</sub> of 0.3 μM. Rabeprazole can be used for the research of gastric ulcerations and gastroesophageal reflux <sup>[2][3][4]</sup> .
<b>In Vitro</b>	Stable heavy isotopes of hydrogen, carbon, and other elements have been incorporated into drug molecules, largely as tracers for quantitation during the drug development process. Deuteration has gained attention because of its potential to affect the pharmacokinetic and metabolic profiles of drugs <sup>[1]</sup> . Rabeprazole attenuates the cell viability of the human gastric cancer cells following treatment with 0.2 mM for 16 hours <sup>[3]</sup> . Rabeprazole completely inhibits the phosphorylation of ERK1/2 in the MKN-28 cells. The gastric cancer cell line MKN-28 is cultured in acidic culture media (pH 5.4) for 2 hours. Pretreatment with Rabeprazole (0.2 mM for 2 hours) leads to strong inhibition of ERK1/2 phosphorylation in the MKN-28 cells <sup>[3]</sup> . MCE has not independently confirmed the accuracy of these methods. They are for reference only.
<b>In Vivo</b>	Rabeprazole (10 mg/kg; P.O.; every 48 h for 18 weeks) course leads to a significant decline in bone mineral density (BMD) and decreases serum calcium level and produces secondary hyperparathyroidism in female mice <sup>[4]</sup> . MCE has not independently confirmed the accuracy of these methods. They are for reference only.

### REFERENCES

- [1]. Tara A Shea, et al. Identification of Proton-Pump Inhibitor Drugs That Inhibit Trichomonas Vaginalis Uridine Nucleoside Ribohydrolase. *Bioorg Med Chem Lett*. 2014 Feb 15;24(4):1080-4.
- [2]. Aly A M Shaalan, et al. Supplement With Calcium or Alendronate Suppresses Osteopenia Due to Long Term Rabeprazole Treatment in Female Mice: Influence on Bone TRAP and Osteopontin Levels. *Front Pharmacol*. 2020 May 13;11:583.
- [3]. Mengli Gu, et al. Rabeprazole Exhibits Antiproliferative Effects on Human Gastric Cancer Cell Lines. *Oncol Lett*. 2014 Oct;8(4):1739-1744.
- [4]. Russak EM, et al. Impact of Deuterium Substitution on the Pharmacokinetics of Pharmaceuticals. *Ann Pharmacother*. 2019 Feb;53(2):211-216.

---

**Caution: Product has not been fully validated for medical applications. For research use only.**

Tel: 609-228-6898

Fax: 609-228-5909

E-mail: [tech@MedChemExpress.com](mailto:tech@MedChemExpress.com)

Address: 1 Deer Park Dr, Suite Q, Monmouth Junction, NJ 08852, USA