



SZABO SCANDIC

Part of Europa Biosite

Produktinformation



Forschungsprodukte & Biochemikalien



Zellkultur & Verbrauchsmaterial



Diagnostik & molekulare Diagnostik



Laborgeräte & Service

Weitere Information auf den folgenden Seiten!
See the following pages for more information!



Lieferung & Zahlungsart

siehe unsere [Liefer- und Versandbedingungen](#)

Zuschläge

- Mindermengenzuschlag
- Trockeneiszuschlag
- Gefahrgutzuschlag
- Expressversand

SZABO-SCANDIC HandelsgmbH

Quellenstraße 110, A-1100 Wien

T. +43(0)1 489 3961-0

F. +43(0)1 489 3961-7

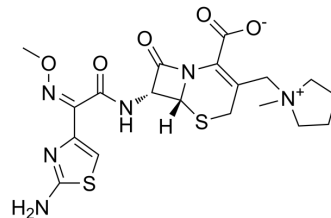
mail@szabo-scandic.com

www.szabo-scandic.com

[linkedin.com/company/szaboscandic](https://www.linkedin.com/company/szaboscandic) 

Cefepime (Standard)

Cat. No.:	HY-B0692R
CAS No.:	88040-23-7
Molecular Formula:	C ₁₉ H ₂₄ N ₆ O ₅ S ₂
Molecular Weight:	480.56
Target:	Penicillin-binding protein (PBP); Bacterial; Antibiotic
Pathway:	Anti-infection
Storage:	Please store the product under the recommended conditions in the Certificate of Analysis.



BIOLOGICAL ACTIVITY

Description	Cefepime (Standard) is the analytical standard of Cefepime. This product is intended for research and analytical applications. Cefepime (BMY-28142) is a broad-spectrum and cross the blood-brain barrier cephalosporin. Cefepime shows antibacterial effects against both Gram-positive and Gram-negative aerobic bacteria. Cefepime induces neurotoxicity ^{[1][2][3][4]} .
IC ₅₀ & Target	Gram-positive and Gram-negative aerobic bacteria ^[1]

REFERENCES

- [1]. Yahav D, et al. Efficacy and safety of cefepime: a systematic review and meta-analysis. *Lancet Infect Dis.* 2007 May;7(5):338-48.
- [2]. Barradell LB, Bryson HM. Cefepime. A review of its antibacterial activity, pharmacokinetic properties and therapeutic use. *Drugs.* 1994;47(3):471-505.
- [3]. Payne LE, et al. Cefepime-induced neurotoxicity: a systematic review. *Crit Care.* 2017 Nov 14;21(1):276. doi: 10.1186/s13054-017-1856-1.
- [4]. Máthé A, et al. The effect of different doses of cisplatin on the pharmacokinetic parameters of cefepime in mice. *Lab Anim.* 2006 Jul;40(3):296-300.

Caution: Product has not been fully validated for medical applications. For research use only.

Tel: 609-228-6898

Fax: 609-228-5909

E-mail: tech@MedChemExpress.com

Address: 1 Deer Park Dr, Suite Q, Monmouth Junction, NJ 08852, USA