



# SZABO SCANDIC

Part of Europa Biosite

## Produktinformation



Forschungsprodukte & Biochemikalien



Zellkultur & Verbrauchsmaterial



Diagnostik & molekulare Diagnostik



Laborgeräte & Service

Weitere Information auf den folgenden Seiten!  
See the following pages for more information!



### Lieferung & Zahlungsart

siehe unsere [Liefer- und Versandbedingungen](#)

### Zuschläge

- Mindermengenzuschlag
- Trockeneiszuschlag
- Gefahrgutzuschlag
- Expressversand

### SZABO-SCANDIC HandelsgmbH

Quellenstraße 110, A-1100 Wien

T. +43(0)1 489 3961-0

F. +43(0)1 489 3961-7

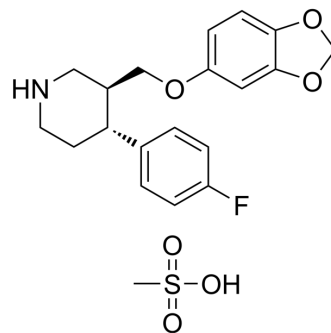
[mail@szabo-scandic.com](mailto:mail@szabo-scandic.com)

[www.szabo-scandic.com](http://www.szabo-scandic.com)

[linkedin.com/company/szaboscandic](https://www.linkedin.com/company/szaboscandic) 

## Paroxetine mesylate

Cat. No.:	HY-B0773
CAS No.:	217797-14-3
Molecular Formula:	C <sub>20</sub> H <sub>24</sub> FNO <sub>6</sub> S
Molecular Weight:	425.47
Target:	Serotonin Transporter; Adrenergic Receptor
Pathway:	Neuronal Signaling; GPCR/G Protein
Storage:	Please store the product under the recommended conditions in the Certificate of Analysis.



### BIOLOGICAL ACTIVITY

#### Description

Paroxetine mesylate, a phenylpiperidine derivative, is a potent and selective serotonin reuptake inhibitor (SSRI). Paroxetine mesylate is a very weak inhibitor of norepinephrine (NE) uptake but it is still more potent at this site than the other SSRIs<sup>[1]</sup>.

### CUSTOMER VALIDATION

- Cell. 2021 Apr 15;184(8):2167-2182.e22.
- J Chem Inf Model. 2021 Jul 21.
- Brain Res. 2019 Oct 1;1720:146296.
- J Mol Cell Cardiol Plus. 2024 Jun, 8, 100072.

See more customer validations on [www.MedChemExpress.com](http://www.MedChemExpress.com)

### REFERENCES

[1]. M Bourin, et al. Paroxetine: a review. CNS Drug Rev. Spring 2001;7(1):25-47

**Caution: Product has not been fully validated for medical applications. For research use only.**

Tel: 609-228-6898

Fax: 609-228-5909

E-mail: [tech@MedChemExpress.com](mailto:tech@MedChemExpress.com)

Address: 1 Deer Park Dr, Suite Q, Monmouth Junction, NJ 08852, USA