



# SZABO SCANDIC

Part of Europa Biosite

## Produktinformation



Forschungsprodukte & Biochemikalien



Zellkultur & Verbrauchsmaterial



Diagnostik & molekulare Diagnostik



Laborgeräte & Service

Weitere Information auf den folgenden Seiten!  
See the following pages for more information!



### Lieferung & Zahlungsart

siehe unsere [Liefer- und Versandbedingungen](#)

### Zuschläge

- Mindermengenzuschlag
- Trockeneiszuschlag
- Gefahrgutzuschlag
- Expressversand

### SZABO-SCANDIC HandelsgmbH

Quellenstraße 110, A-1100 Wien

T. +43(0)1 489 3961-0

F. +43(0)1 489 3961-7

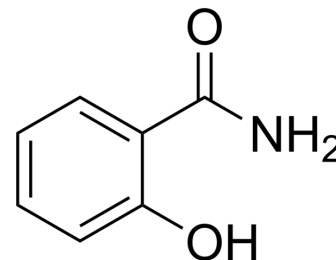
[mail@szabo-scandic.com](mailto:mail@szabo-scandic.com)

[www.szabo-scandic.com](http://www.szabo-scandic.com)

[linkedin.com/company/szaboscandic](https://www.linkedin.com/company/szaboscandic) 

## Salicylamide (Standard)

<b>Cat. No.:</b>	HY-B0811R
<b>CAS No.:</b>	65-45-2
<b>Molecular Formula:</b>	C <sub>7</sub> H <sub>7</sub> NO <sub>2</sub>
<b>Molecular Weight:</b>	137.14
<b>Target:</b>	Others
<b>Pathway:</b>	Others
<b>Storage:</b>	Please store the product under the recommended conditions in the Certificate of Analysis.



### BIOLOGICAL ACTIVITY

#### Description

Salicylamide (Standard) is the analytical standard of Salicylamide. This product is intended for research and analytical applications. Salicylamide is an inhibitor of microsomal UDP-glucuronosyltransferase. Salicylamide is an analgesic and anti-pyretic agent.

### REFERENCES

- [1]. Kushkevych I, et al. Activity of selected salicylamides against intestinal sulfate-reducing bacteria. *Neuro Endocrinol Lett.* 2015;36 Suppl 1:106-13.
- [2]. Halstead PK, et al. Effect of salicylamide on skeletal glycosaminoglycan sulfation and calcification in fetal rat limbs. *Drug Nutr Interact.* 1981;1(1):75-86.
- [3]. Knight E, et al. Effect of salicylamide on the placental transfer and fetal tissue distribution of sodium-35S-sulfate in the rat. *J Nutr.* 1978 Feb;108(2):216-25.

**Caution: Product has not been fully validated for medical applications. For research use only.**

Tel: 609-228-6898

Fax: 609-228-5909

E-mail: [tech@MedChemExpress.com](mailto:tech@MedChemExpress.com)

Address: 1 Deer Park Dr, Suite Q, Monmouth Junction, NJ 08852, USA