



# SZABO SCANDIC

Part of Europa Biosite

## Produktinformation



Forschungsprodukte & Biochemikalien



Zellkultur & Verbrauchsmaterial



Diagnostik & molekulare Diagnostik



Laborgeräte & Service

Weitere Information auf den folgenden Seiten!  
See the following pages for more information!



### Lieferung & Zahlungsart

siehe unsere [Liefer- und Versandbedingungen](#)

### Zuschläge

- Mindermengenzuschlag
- Trockeneiszuschlag
- Gefahrgutzuschlag
- Expressversand

### SZABO-SCANDIC HandelsgmbH

Quellenstraße 110, A-1100 Wien

T. +43(0)1 489 3961-0

F. +43(0)1 489 3961-7

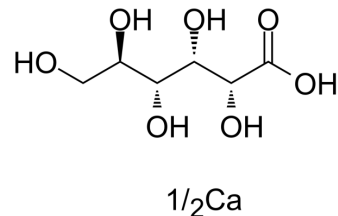
[mail@szabo-scandic.com](mailto:mail@szabo-scandic.com)

[www.szabo-scandic.com](http://www.szabo-scandic.com)

[linkedin.com/company/szaboscandic](https://www.linkedin.com/company/szaboscandic) 

## Gluconate Calcium

<b>Cat. No.:</b>	HY-B1092
<b>CAS No.:</b>	299-28-5
<b>Molecular Formula:</b>	C <sub>6</sub> H <sub>12</sub> O <sub>7</sub> ·1/2Ca
<b>Molecular Weight:</b>	216.2
<b>Target:</b>	Endogenous Metabolite
<b>Pathway:</b>	Metabolic Enzyme/Protease
<b>Storage:</b>	4°C, sealed storage, away from moisture * In solvent : -80°C, 6 months; -20°C, 1 month (sealed storage, away from moisture)



### SOLVENT & SOLUBILITY

#### In Vitro

H<sub>2</sub>O : 20 mg/mL (92.51 mM; Need ultrasonic)  
DMSO : 1 mg/mL (4.63 mM; ultrasonic and warming and heat to 80°C)

Preparing Stock Solutions	Solvent Concentration	Mass	1 mg	5 mg	10 mg
		1 mM	4.6253 mL	23.1267 mL	46.2535 mL
	5 mM	0.9251 mL	4.6253 mL	9.2507 mL	
	10 mM	0.4625 mL	2.3127 mL	4.6253 mL	

Please refer to the solubility information to select the appropriate solvent.

### BIOLOGICAL ACTIVITY

#### Description

Gluconate Calcium (Calcium D-gluconate) is a mineral supplement, manufactured by the neutralization of gluconic acid with lime or calcium carbonate.

#### IC<sub>50</sub> & Target

Human Endogenous Metabolite

**Caution: Product has not been fully validated for medical applications. For research use only.**

Tel: 609-228-6898

Fax: 609-228-5909

E-mail: tech@MedChemExpress.com

Address: 1 Deer Park Dr, Suite Q, Monmouth Junction, NJ 08852, USA