



SZABO SCANDIC

Part of Europa Biosite

Produktinformation



Forschungsprodukte & Biochemikalien



Zellkultur & Verbrauchsmaterial



Diagnostik & molekulare Diagnostik



Laborgeräte & Service

Weitere Information auf den folgenden Seiten!
See the following pages for more information!



Lieferung & Zahlungsart

siehe unsere [Liefer- und Versandbedingungen](#)

Zuschläge

- Mindermengenzuschlag
- Trockeneiszuschlag
- Gefahrgutzuschlag
- Expressversand

SZABO-SCANDIC HandelsgmbH

Quellenstraße 110, A-1100 Wien

T. +43(0)1 489 3961-0

F. +43(0)1 489 3961-7

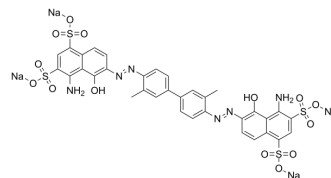
mail@szabo-scandic.com

www.szabo-scandic.com

[linkedin.com/company/szaboscandic](https://www.linkedin.com/company/szaboscandic) 

Evans Blue

Cat. No.:	HY-B1102
CAS No.:	314-13-6
Molecular Formula:	C ₃₄ H ₂₄ N ₆ Na ₄ O ₁₄ S ₄
Molecular Weight:	960.81
Target:	EAAT; iGluR
Pathway:	Membrane Transporter/Ion Channel; Neuronal Signaling
Storage:	4°C, sealed storage, away from moisture * In solvent : -80°C, 6 months; -20°C, 1 month (sealed storage, away from moisture)



SOLVENT & SOLUBILITY

In Vitro

H₂O : 33.33 mg/mL (34.69 mM; Need ultrasonic)
 DMSO : ≥ 25 mg/mL (26.02 mM)
 * "≥" means soluble, but saturation unknown.

Preparing Stock Solutions	Solvent Concentration	Mass		
		1 mg	5 mg	10 mg
	1 mM	1.0408 mL	5.2039 mL	10.4079 mL
	5 mM	0.2082 mL	1.0408 mL	2.0816 mL
	10 mM	0.1041 mL	0.5204 mL	1.0408 mL

Please refer to the solubility information to select the appropriate solvent.

In Vivo

- Add each solvent one by one: 10% DMSO >> 40% PEG300 >> 5% Tween-80 >> 45% saline
Solubility: ≥ 2.5 mg/mL (2.60 mM); Clear solution
- Add each solvent one by one: 10% DMSO >> 90% (20% SBE-β-CD in saline)
Solubility: ≥ 2.5 mg/mL (2.60 mM); Clear solution
- Add each solvent one by one: 10% DMSO >> 90% corn oil
Solubility: 2.5 mg/mL (2.60 mM); Clear solution; Need warming

BIOLOGICAL ACTIVITY

Description

Evans Blue (Direct Blue 53) is a potent inhibitor of L-glutamate uptake via the membrane bound excitatory amino acid transporter (EAAT). Evans Blue is a L-glutamate and kainate receptor-mediated currents inhibitor. Evans Blue has a strong affinity towards serum albumin, making it a high molecular weight protein tracer. Evans Blue is also used to study BBB (blood-brain barrier) permeability^{[1][2]}.

In Vitro

Evans blue, a bis-azo dye, is a non-permeating dye. In presence of plasma membrane damage, Evans blue enters in the cytoplasm and nucleus, thereby staining them blue. Evans blue is used for checking cell viability^[1].

MCE has not independently confirmed the accuracy of these methods. They are for reference only.

In Vivo

The amount of Evans Blue (2% solution; 4 mL/kg) stain accumulated in the brains of mice after ICH produced by collagenase injection was independent of the stain administration route^[2].

MCE has not independently confirmed the accuracy of these methods. They are for reference only.

Animal Model:	CD-1 mice bearing intracerebral hemorrhage (ICH) ^[2]
---------------	---

Dosage:	2% solution; 4 mL/kg
---------	----------------------

Administration:	Jugular vein or intraperitoneal injection; once
-----------------	---

Result:	Showed the amount of stain accumulated in the brains.
---------	---

CUSTOMER VALIDATION

- Nat Neurosci. 2023 Apr;26(4):542-554.
- Nat Commun. 2024 Jan 19;15(1):613.
- Theranostics. 2023 Jun 26;13(11):3761-3780.
- Adv Healthc Mater. 2024 Jan;13(3):e2302320.
- Int Immunopharmacol. 2024 Feb 13;129:111618.

See more customer validations on www.MedChemExpress.com

REFERENCES

[1]. Anatol Manaenko, et al. Comparison Evans Blue injection routes: Intravenous versus intraperitoneal, for measurement of blood-brain barrier in a mice hemorrhage model. J Neurosci Methods. 2011 Feb 15;195(2):206-10.

[2]. Linpeng Yao, et al. Evans Blue Dye: A Revisit of Its Applications in Biomedicine. Contrast Media Mol Imaging. 2018 Apr 22;2018:7628037.

Caution: Product has not been fully validated for medical applications. For research use only.

Tel: 609-228-6898

Fax: 609-228-5909

E-mail: tech@MedChemExpress.com

Address: 1 Deer Park Dr, Suite Q, Monmouth Junction, NJ 08852, USA