



# SZABO SCANDIC

Part of Europa Biosite

## Produktinformation



Forschungsprodukte & Biochemikalien



Zellkultur & Verbrauchsmaterial



Diagnostik & molekulare Diagnostik



Laborgeräte & Service

Weitere Information auf den folgenden Seiten!  
See the following pages for more information!



### Lieferung & Zahlungsart

siehe unsere [Liefer- und Versandbedingungen](#)

### Zuschläge

- Mindermengenzuschlag
- Trockeneiszuschlag
- Gefahrgutzuschlag
- Expressversand

### SZABO-SCANDIC HandelsgmbH

Quellenstraße 110, A-1100 Wien

T. +43(0)1 489 3961-0

F. +43(0)1 489 3961-7

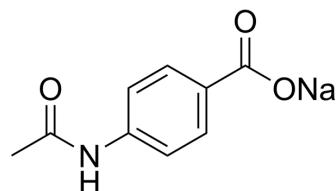
[mail@szabo-scandic.com](mailto:mail@szabo-scandic.com)

[www.szabo-scandic.com](http://www.szabo-scandic.com)

[linkedin.com/company/szaboscandic](https://www.linkedin.com/company/szaboscandic) 

## Acedoben sodium

Cat. No.:	HY-B1250A
CAS No.:	29305-16-6
Molecular Formula:	C <sub>9</sub> H <sub>8</sub> NNaO <sub>3</sub>
Molecular Weight:	201
Target:	Biochemical Assay Reagents
Pathway:	Others
Storage:	Please store the product under the recommended conditions in the Certificate of Analysis.



### SOLVENT & SOLUBILITY

#### In Vitro

H<sub>2</sub>O : 100 mg/mL (497.51 mM; ultrasonic and warming and heat to 80°C)

Preparing Stock Solutions	Solvent Concentration	Mass		
		1 mg	5 mg	10 mg
	1 mM	4.9751 mL	24.8756 mL	49.7512 mL
	5 mM	0.9950 mL	4.9751 mL	9.9502 mL
	10 mM	0.4975 mL	2.4876 mL	4.9751 mL

Please refer to the solubility information to select the appropriate solvent.

### BIOLOGICAL ACTIVITY

#### Description

Acedoben sodium is the sodium form of Acedoben. Acedoben is a biochemical reagent that can be used as a biological material or organic compound for life science related research<sup>[1]</sup>.

### REFERENCES

[1]. Boldon J A, et al. Physicochemical properties of acedoben and its trifluoroacetamido derivative. Results in Chemistry, 2023, 6: 101075.

**Caution: Product has not been fully validated for medical applications. For research use only.**

Tel: 609-228-6898

Fax: 609-228-5909

E-mail: tech@MedChemExpress.com

Address: 1 Deer Park Dr, Suite Q, Monmouth Junction, NJ 08852, USA