



SZABO SCANDIC

Part of Europa Biosite

Produktinformation



Forschungsprodukte & Biochemikalien



Zellkultur & Verbrauchsmaterial



Diagnostik & molekulare Diagnostik



Laborgeräte & Service

Weitere Information auf den folgenden Seiten!
See the following pages for more information!



Lieferung & Zahlungsart

siehe unsere [Liefer- und Versandbedingungen](#)

Zuschläge

- Mindermengenzuschlag
- Trockeneiszuschlag
- Gefahrgutzuschlag
- Expressversand

SZABO-SCANDIC HandelsgmbH

Quellenstraße 110, A-1100 Wien

T. +43(0)1 489 3961-0

F. +43(0)1 489 3961-7

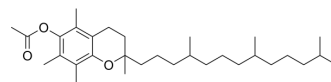
mail@szabo-scandic.com

www.szabo-scandic.com

[linkedin.com/company/szaboscandic](https://www.linkedin.com/company/szaboscandic) 

(±)-α-Tocopherol acetate

| | | | |
|---------------------------|--|-------|----------|
| Cat. No.: | HY-B1278B | | |
| CAS No.: | 7695-91-2 | | |
| Molecular Formula: | C ₃₁ H ₅₂ O ₃ | | |
| Molecular Weight: | 472.74 | | |
| Target: | Biochemical Assay Reagents | | |
| Pathway: | Others | | |
| Storage: | Pure form | -20°C | 3 years |
| | | 4°C | 2 years |
| | In solvent | -80°C | 6 months |
| | | -20°C | 1 month |



SOLVENT & SOLUBILITY

| | | | | | |
|---|--|--------------------------|--------------|------------|------------|
| In Vitro | DMSO : 100 mg/mL (211.53 mM; Need ultrasonic) | | | | |
| | | Solvent Concentration | Mass 1 mg | 5 mg | 10 mg |
| | Preparing Stock Solutions | 1 mM | 2.1153 mL | 10.5766 mL | 21.1533 mL |
| | | 5 mM | 0.4231 mL | 2.1153 mL | 4.2307 mL |
| 10 mM | | 0.2115 mL | 1.0577 mL | 2.1153 mL | |
| Please refer to the solubility information to select the appropriate solvent. | | | | | |
| In Vivo | <ol style="list-style-type: none"> Add each solvent one by one: 10% DMSO >> 40% PEG300 >> 5% Tween-80 >> 45% saline Solubility: 2.5 mg/mL (5.29 mM); Suspended solution; Need ultrasonic Add each solvent one by one: 10% DMSO >> 90% (20% SBE-β-CD in saline) Solubility: 2.5 mg/mL (5.29 mM); Suspended solution; Need ultrasonic Add each solvent one by one: 10% DMSO >> 90% corn oil Solubility: ≥ 2.5 mg/mL (5.29 mM); Clear solution | | | | |

BIOLOGICAL ACTIVITY

| | |
|--------------------|---|
| Description | (±)-α-Tocopherol acetate ((±)-Vitamin E acetate), is a orally active synthetic form of vitamin E. (±)-α-Tocopherol acetate is the ester of acetic acid and α-tocopherol. (±)-α-Tocopherol acetate can be used for the research of the susceptibility of farmed fish to infectious diseases ^[1] . |
| In Vivo | (±)-α-Tocopherol acetate ((±)-Vitamin E acetate) (oral; 600 mg/kg, 1200 mg/kg, 1800 mg/kg; 15 d, 30 d and 45 d) exhibits significantly high complement activity ^[1] . (±)-α-Tocopherol acetate (oral; 600 mg/kg, 1200 mg/kg, 1800 mg/kg; 15 d, 30 d and 45 d) stimulates the seabream's non- |

specific immune system after 30 days of administration in the diet (1200 mg/kg)^[1].

MCE has not independently confirmed the accuracy of these methods. They are for reference only.

| | |
|-----------------|--|
| Animal Model: | Gilthead seabream (<i>Sparus aurata</i> L.) ^[1] |
| Dosage: | 600 mg/kg, 1200 mg/kg, 1800 mg/kg |
| Administration: | oral; 600 mg/kg, 1200 mg/kg, 1800 mg/kg; 15 d, 30 d and 45 d |
| Result: | <p>Had a positive correlation with serum α-tocopherol levels and the increase being linked to both the dosage and length of use.</p> <p>Showed no enhancement in any of their immune parameters, while those fed the diet supplemented with 1200 mg/kg presented a slightly higher (but not statistically significant) specific growth rate than fish fed the other diets.</p> <p>Enhanced the serum haemolytic activity and the phagocytosis of head-kidney leucocytes by the dietary intake of 1200 mg/kg after 30 and 45 days, although leucocyte migration and respiratory burst activity remained unaffected.</p> <p>Provoked no immunostimulation in 1800 mg/kg.</p> |

REFERENCES

[1]. J Ortuño, et al. High dietary intake of alpha-tocopherol acetate enhances the non-specific immune response of gilthead seabream (*Sparus aurata* L.). *Fish Shellfish Immunol.* 2000 May;10(4):293-307

Caution: Product has not been fully validated for medical applications. For research use only.

Tel: 609-228-6898

Fax: 609-228-5909

E-mail: tech@MedChemExpress.com

Address: 1 Deer Park Dr, Suite Q, Monmouth Junction, NJ 08852, USA