



SZABO SCANDIC

Part of Europa Biosite

Produktinformation



Forschungsprodukte & Biochemikalien



Zellkultur & Verbrauchsmaterial



Diagnostik & molekulare Diagnostik



Laborgeräte & Service

Weitere Information auf den folgenden Seiten!
See the following pages for more information!



Lieferung & Zahlungsart

siehe unsere [Liefer- und Versandbedingungen](#)

Zuschläge

- Mindermengenzuschlag
- Trockeneiszuschlag
- Gefahrgutzuschlag
- Expressversand

SZABO-SCANDIC HandelsgmbH

Quellenstraße 110, A-1100 Wien

T. +43(0)1 489 3961-0

F. +43(0)1 489 3961-7

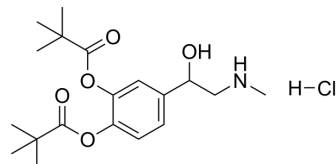
mail@szabo-scandic.com

www.szabo-scandic.com

[linkedin.com/company/szaboscandic](https://www.linkedin.com/company/szaboscandic) 

Dipivefrin hydrochloride (Standard)

Cat. No.:	HY-B1323R
CAS No.:	64019-93-8
Molecular Formula:	C ₁₉ H ₃₀ ClNO ₅
Molecular Weight:	387.9
Target:	Endogenous Metabolite
Pathway:	Metabolic Enzyme/Protease
Storage:	Please store the product under the recommended conditions in the Certificate of Analysis.



BIOLOGICAL ACTIVITY

Description

Dipivefrin (hydrochloride) (Standard) is the analytical standard of Dipivefrin (hydrochloride). This product is intended for research and analytical applications. Dipivefrin hydrochloride (Dipivefrine hydrochloride) is an antiglaucoma proagent that is hydrolyzed to the active compound, epinephrine, by esterases in the cornea^{[1][2]}.

REFERENCES

- [1]. Edgar DF, et al. Effects of dipivefrin and pilocarpine on pupil diameter, automated perimetry and LogMAR acuity. *Graefes Arch Clin Exp Ophthalmol.* 1999 Feb;237(2):117-24.
- [2]. Anderson JA, et al. Effects of echothiophate on enzymatic hydrolysis of dipivefrin. *Arch Ophthalmol.* 1984 Jun;102(6):913-6.
- [3]. Introini-Collison I, et al. Memory-enhancing effects of post-training dipivefrin and epinephrine: involvement of peripheral and central adrenergic receptors. *Brain Res.* 1992 Feb 14;572(1-2):81-6.

Caution: Product has not been fully validated for medical applications. For research use only.

Tel: 609-228-6898

Fax: 609-228-5909

E-mail: tech@MedChemExpress.com

Address: 1 Deer Park Dr, Suite Q, Monmouth Junction, NJ 08852, USA