



# SZABO SCANDIC

Part of Europa Biosite

## Produktinformation



Forschungsprodukte & Biochemikalien



Zellkultur & Verbrauchsmaterial



Diagnostik & molekulare Diagnostik



Laborgeräte & Service

Weitere Information auf den folgenden Seiten!  
See the following pages for more information!



### Lieferung & Zahlungsart

siehe unsere [Liefer- und Versandbedingungen](#)

### Zuschläge

- Mindermengenzuschlag
- Trockeneiszuschlag
- Gefahrgutzuschlag
- Expressversand

### SZABO-SCANDIC HandelsgmbH

Quellenstraße 110, A-1100 Wien

T. +43(0)1 489 3961-0

F. +43(0)1 489 3961-7

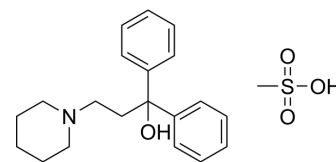
[mail@szabo-scandic.com](mailto:mail@szabo-scandic.com)

[www.szabo-scandic.com](http://www.szabo-scandic.com)

[linkedin.com/company/szaboscandic](https://www.linkedin.com/company/szaboscandic) 

## Pridinol mesylate (Standard)

Cat. No.:	HY-B1343R
CAS No.:	6856-31-1
Molecular Formula:	C <sub>21</sub> H <sub>29</sub> NO <sub>4</sub> S
Molecular Weight:	391.52
Target:	Cholinesterase (ChE)
Pathway:	Neuronal Signaling
Storage:	Please store the product under the recommended conditions in the Certificate of Analysis.



### BIOLOGICAL ACTIVITY

#### Description

Pridinol (mesylate) (Standard) is the analytical standard of Pridinol (mesylate). This product is intended for research and analytical applications. Pridinol mesylate is an orally active and potent central anticholinergic agent, and acts as muscle relaxant<sup>[1]</sup>.

### REFERENCES

- [1]. Richter M, et al. Pharmacokinetics of oral pridinol: Results of a randomized, crossover bioequivalence trial in healthy subjects. *Int J Clin Pharmacol Ther*. 2021 Jun;59(6):471-477.
- [2]. Duperray, B., et al. The fate of pridinol in the organism: Pharmacokinetics and distribution in animals. *European Journal of Drug Metabolism and Pharmacokinetics* 2, 121-130 (1977).

**Caution: Product has not been fully validated for medical applications. For research use only.**

Tel: 609-228-6898

Fax: 609-228-5909

E-mail: [tech@MedChemExpress.com](mailto:tech@MedChemExpress.com)

Address: 1 Deer Park Dr, Suite Q, Monmouth Junction, NJ 08852, USA