



SZABO SCANDIC

Part of Europa Biosite

Produktinformation



Forschungsprodukte & Biochemikalien



Zellkultur & Verbrauchsmaterial



Diagnostik & molekulare Diagnostik



Laborgeräte & Service

Weitere Information auf den folgenden Seiten!
See the following pages for more information!



Lieferung & Zahlungsart

siehe unsere [Liefer- und Versandbedingungen](#)

Zuschläge

- Mindermengenzuschlag
- Trockeneiszuschlag
- Gefahrgutzuschlag
- Expressversand

SZABO-SCANDIC HandelsgmbH

Quellenstraße 110, A-1100 Wien

T. +43(0)1 489 3961-0

F. +43(0)1 489 3961-7

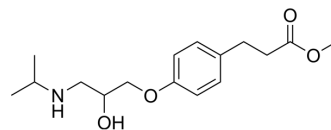
mail@szabo-scandic.com

www.szabo-scandic.com

[linkedin.com/company/szaboscandic](https://www.linkedin.com/company/szaboscandic) 

Esmolol

Cat. No.:	HY-B1392A
CAS No.:	81147-92-4
Molecular Formula:	C ₁₆ H ₂₅ NO ₄
Molecular Weight:	295.37
Target:	Adrenergic Receptor
Pathway:	GPCR/G Protein; Neuronal Signaling
Storage:	Please store the product under the recommended conditions in the Certificate of Analysis.



BIOLOGICAL ACTIVITY

Description	Esmolol is a potent and cardio-selective β-adrenergic blocker. Esmolol shows cardioprotection. Esmolol has the potential for the research of tachycardia with ischemic heart disease ^{[1][2]} .	
IC₅₀ & Target	β-adrenoceptor	
In Vivo	Esmolol (0.4, 0.8 mg/kg/h; Intraarterial continuous infusion for 120 min) shows cardioprotection in mice ^[2] . MCE has not independently confirmed the accuracy of these methods. They are for reference only.	
	Animal Model:	C57BL/6J wildtype mice ^[2]
	Dosage:	0.4, 0.8 mg/kg/h
	Administration:	Intraarterial continuous infusion, 120 min; after 60 min of myocardial ischemia
	Result:	Showed robust cardioprotection with esmolol of 24.3%.

CUSTOMER VALIDATION

- Clin Chem. 2019 Dec;65(12):1522-1531.
- EMBO Rep. 2022 Apr 11;e53932.
- J Pharmaceut Biomed. 2020, 113870.

See more customer validations on www.MedChemExpress.com

REFERENCES

[1]. Reves JG, et al. Esmolol for treatment of intraoperative tachycardia and/or hypertension in patients having cardiac operations. Bolus loading technique. J Thorac Cardiovasc Surg. 1990 Aug;100(2):221-7.

Caution: Product has not been fully validated for medical applications. For research use only.

Tel: 609-228-6898

Fax: 609-228-5909

E-mail: tech@MedChemExpress.com

Address: 1 Deer Park Dr, Suite Q, Monmouth Junction, NJ 08852, USA