



SZABO SCANDIC

Part of Europa Biosite

Produktinformation



Forschungsprodukte & Biochemikalien



Zellkultur & Verbrauchsmaterial



Diagnostik & molekulare Diagnostik



Laborgeräte & Service

Weitere Information auf den folgenden Seiten!
See the following pages for more information!



Lieferung & Zahlungsart

siehe unsere [Liefer- und Versandbedingungen](#)

Zuschläge

- Mindermengenzuschlag
- Trockeneiszuschlag
- Gefahrgutzuschlag
- Expressversand

SZABO-SCANDIC HandelsgmbH

Quellenstraße 110, A-1100 Wien

T. +43(0)1 489 3961-0

F. +43(0)1 489 3961-7

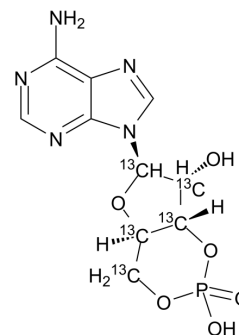
mail@szabo-scandic.com

www.szabo-scandic.com

[linkedin.com/company/szaboscandic](https://www.linkedin.com/company/szaboscandic) 

Cyclic AMP-¹³C₅

Cat. No.:	HY-B1511S
CAS No.:	2170095-23-3
Molecular Formula:	C ₅ ¹³ C ₅ H ₁₂ N ₅ O ₆ P
Molecular Weight:	334.17
Target:	Isotope-Labeled Compounds
Pathway:	Others
Storage:	-20°C, protect from light, stored under nitrogen * In solvent : -80°C, 6 months; -20°C, 1 month (protect from light, stored under nitrogen)



SOLVENT & SOLUBILITY

In Vitro

0.1 M NaOH : 30 mg/mL (89.77 mM; ultrasonic and warming and adjust pH to 6 with NaOH)

Concentration	Mass		
	1 mg	5 mg	10 mg
1 mM	2.9925 mL	14.9624 mL	29.9249 mL
5 mM	0.5985 mL	2.9925 mL	5.9850 mL
10 mM	0.2992 mL	1.4962 mL	2.9925 mL

Please refer to the solubility information to select the appropriate solvent.

BIOLOGICAL ACTIVITY

Description

Cyclic AMP-¹³C₅ is a deuterated cyclic AMP.

In Vitro

Stable heavy isotopes of hydrogen, carbon, and other elements have been incorporated into drug molecules, largely as tracers for quantitation during the drug development process. Deuteration has gained attention because of its potential to affect the pharmacokinetic and metabolic profiles of drugs^[1].

MCE has not independently confirmed the accuracy of these methods. They are for reference only.

REFERENCES

[1]. Russak EM, et al. Impact of Deuterium Substitution on the Pharmacokinetics of Pharmaceuticals. *Ann Pharmacother.* 2019 Feb;53(2):211-226.

Caution: Product has not been fully validated for medical applications. For research use only.

Tel: 609-228-6898

Fax: 609-228-5909

E-mail: tech@MedChemExpress.com

Address: 1 Deer Park Dr, Suite Q, Monmouth Junction, NJ 08852, USA