



SZABO SCANDIC

Part of Europa Biosite

Produktinformation



Forschungsprodukte & Biochemikalien



Zellkultur & Verbrauchsmaterial



Diagnostik & molekulare Diagnostik



Laborgeräte & Service

Weitere Information auf den folgenden Seiten!
See the following pages for more information!



Lieferung & Zahlungsart

siehe unsere [Liefer- und Versandbedingungen](#)

Zuschläge

- Mindermengenzuschlag
- Trockeneiszuschlag
- Gefahrgutzuschlag
- Expressversand

SZABO-SCANDIC HandelsgmbH

Quellenstraße 110, A-1100 Wien

T. +43(0)1 489 3961-0

F. +43(0)1 489 3961-7

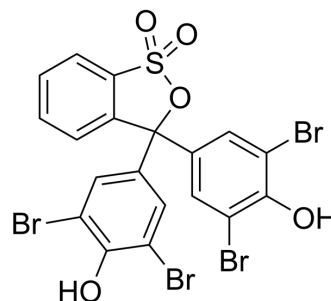
mail@szabo-scandic.com

www.szabo-scandic.com

[linkedin.com/company/szaboscandic](https://www.linkedin.com/company/szaboscandic) 

Bromophenol blue

Cat. No.:	HY-B1571
CAS No.:	115-39-9
Molecular Formula:	C ₁₉ H ₁₀ Br ₄ O ₃ S
Molecular Weight:	669.96
Target:	Fluorescent Dye
Pathway:	Others
Storage:	4°C, sealed storage, away from moisture and light * In solvent : -80°C, 6 months; -20°C, 1 month (sealed storage, away from moisture and light)



SOLVENT & SOLUBILITY

In Vitro	DMSO : 50 mg/mL (74.63 mM; Need ultrasonic)					
	Preparing Stock Solutions	Solvent	Mass	1 mg	5 mg	10 mg
		Concentration				
		1 mM		1.4926 mL	7.4631 mL	14.9263 mL
		5 mM		0.2985 mL	1.4926 mL	2.9853 mL
	10 mM		0.1493 mL	0.7463 mL	1.4926 mL	
Please refer to the solubility information to select the appropriate solvent.						
In Vivo	1. Add each solvent one by one: 10% DMSO >> 40% PEG300 >> 5% Tween-80 >> 45% saline Solubility: ≥ 2.5 mg/mL (3.73 mM); Clear solution 2. Add each solvent one by one: 10% DMSO >> 90% (20% SBE-β-CD in saline) Solubility: ≥ 2.5 mg/mL (3.73 mM); Clear solution					

BIOLOGICAL ACTIVITY

Description	Bromophenol blue is an acid phthalein dye, and it is used as a tracking dye for electrophoresis. Bromophenol blue is also used as a pH indicator, with a transition range of pH 3 to 4.6 ^{[1][2]} .
--------------------	--

REFERENCES

- [1]. Mendoza L, et, al. Nanocellulose for gel electrophoresis. J Colloid Interface Sci. 2019 Mar 22; 540: 148-154.
- [2]. Dangui AZ, et, al. Preferential solvation bromophenol blue in water-alcohol binary mixture. Spectrochim Acta A Mol Biomol Spectrosc. 2018 Oct 5; 203: 333-341.
- [3]. Tanuja T Merianda, et al. Merianda TT, Lin AC, Lam JS, Vuppalanchi D, Willis DE, Karin N, Holt CE, Twiss JL. A functional equivalent of endoplasmic reticulum and Golgi

Caution: Product has not been fully validated for medical applications. For research use only.

Tel: 609-228-6898

Fax: 609-228-5909

E-mail: tech@MedChemExpress.com

Address: 1 Deer Park Dr, Suite Q, Monmouth Junction, NJ 08852, USA