



SZABO SCANDIC

Part of Europa Biosite

Produktinformation



Forschungsprodukte & Biochemikalien



Zellkultur & Verbrauchsmaterial



Diagnostik & molekulare Diagnostik



Laborgeräte & Service

Weitere Information auf den folgenden Seiten!
See the following pages for more information!



Lieferung & Zahlungsart

siehe unsere [Liefer- und Versandbedingungen](#)

Zuschläge

- Mindermengenzuschlag
- Trockeneiszuschlag
- Gefahrgutzuschlag
- Expressversand

SZABO-SCANDIC HandelsgmbH

Quellenstraße 110, A-1100 Wien

T. +43(0)1 489 3961-0

F. +43(0)1 489 3961-7

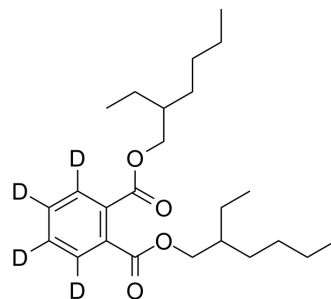
mail@szabo-scandic.com

www.szabo-scandic.com

[linkedin.com/company/szaboscandic](https://www.linkedin.com/company/szaboscandic) 

DEHP-d4

Cat. No.:	HY-B1945S	
CAS No.:	93951-87-2	
Molecular Formula:	C ₂₄ H ₃₄ D ₄ O ₄	
Molecular Weight:	394.58	
Target:	Endogenous Metabolite	
Pathway:	Metabolic Enzyme/Protease	
Storage:	Pure form	-20°C 3 years 4°C 2 years
	In solvent	-80°C 6 months -20°C 1 month



SOLVENT & SOLUBILITY

In Vitro

DMSO : 100 mg/mL (253.43 mM; Need ultrasonic)

Concentration	Solvent	Mass		
		1 mg	5 mg	10 mg
Preparing Stock Solutions	1 mM	2.5343 mL	12.6717 mL	25.3434 mL
	5 mM	0.5069 mL	2.5343 mL	5.0687 mL
	10 mM	0.2534 mL	1.2672 mL	2.5343 mL

Please refer to the solubility information to select the appropriate solvent.

BIOLOGICAL ACTIVITY

Description

DEHP-d₄ is the deuterium labeled DEHP. DEHP (Bis(2-ethylhexyl) phthalate) is an endogenous metabolite.

In Vitro

Stable heavy isotopes of hydrogen, carbon, and other elements have been incorporated into drug molecules, largely as tracers for quantitation during the drug development process. Deuteration has gained attention because of its potential to affect the pharmacokinetic and metabolic profiles of drugs^[1].

MCE has not independently confirmed the accuracy of these methods. They are for reference only.

REFERENCES

[1]. Russak EM, et al. Impact of Deuterium Substitution on the Pharmacokinetics of Pharmaceuticals. *Ann Pharmacother.* 2019;53(2):211-216.

Caution: Product has not been fully validated for medical applications. For research use only.

Tel: 609-228-6898

Fax: 609-228-5909

E-mail: tech@MedChemExpress.com

Address: 1 Deer Park Dr, Suite Q, Monmouth Junction, NJ 08852, USA