



SZABO SCANDIC

Part of Europa Biosite

Produktinformation



Forschungsprodukte & Biochemikalien



Zellkultur & Verbrauchsmaterial



Diagnostik & molekulare Diagnostik



Laborgeräte & Service

Weitere Information auf den folgenden Seiten!
See the following pages for more information!



Lieferung & Zahlungsart

siehe unsere [Liefer- und Versandbedingungen](#)

Zuschläge

- Mindermengenzuschlag
- Trockeneiszuschlag
- Gefahrgutzuschlag
- Expressversand

SZABO-SCANDIC HandelsgmbH

Quellenstraße 110, A-1100 Wien

T. +43(0)1 489 3961-0

F. +43(0)1 489 3961-7

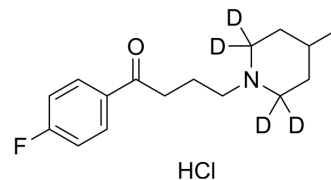
mail@szabo-scandic.com

www.szabo-scandic.com

[linkedin.com/company/szaboscandic](https://www.linkedin.com/company/szaboscandic) 

Melperone-d₄ hydrochloride

Cat. No.:	HY-B2169S2
CAS No.:	1219798-80-7
Molecular Formula:	C ₁₆ H ₁₉ D ₄ ClFNO
Molecular Weight:	303.84
Target:	Isotope-Labeled Compounds
Pathway:	Others
Storage:	4°C, sealed storage, away from moisture * In solvent : -80°C, 6 months; -20°C, 1 month (sealed storage, away from moisture)



SOLVENT & SOLUBILITY

In Vitro

DMSO : 20 mg/mL (65.82 mM; Need ultrasonic and warming)

Concentration	Solvent	Mass		
		1 mg	5 mg	10 mg
Preparing Stock Solutions	1 mM	3.2912 mL	16.4560 mL	32.9121 mL
	5 mM	0.6582 mL	3.2912 mL	6.5824 mL
	10 mM	0.3291 mL	1.6456 mL	3.2912 mL

Please refer to the solubility information to select the appropriate solvent.

BIOLOGICAL ACTIVITY

Description

Melperone-d₄ (hydrochloride) is the deuterium labeled Melperone. Melperone, a butyrophenone, is an antipsychotic agent used for sleep induction which is frequently prescribed in psychiatric setting[1]. Melperone has been used for a variety of indications, including the treatment of schizophrenia, but also for agitation in the elderly[2].

In Vitro

Stable heavy isotopes of hydrogen, carbon, and other elements have been incorporated into drug molecules, largely as tracers for quantitation during the drug development process. Deuteration has gained attention because of its potential to affect the pharmacokinetic and metabolic profiles of drugs^[1].
MCE has not independently confirmed the accuracy of these methods. They are for reference only.

REFERENCES

- [1]. Russak EM, et al. Impact of Deuterium Substitution on the Pharmacokinetics of Pharmaceuticals. *Ann Pharmacother*. 2019;53(2):211-216.
- [2]. Hefner G, et al. Melperone but not bisoprolol or metoprolol is a clinically relevant inhibitor of CYP2D6: evidence from a therapeutic drug monitoring survey. *J Neural Transm (Vienna)*. 2015 Nov;122(11):1609-17.

[3]. Bobo WV, et al. Melperone, an atypical antipsychotic drug with clozapine-like effect on plasma prolactin: contrast with typical neuroleptics. Hum Psychopharmacol. 2009 Jul;24(5):415-22.

Caution: Product has not been fully validated for medical applications. For research use only.

Tel: 609-228-6898

Fax: 609-228-5909

E-mail: tech@MedChemExpress.com

Address: 1 Deer Park Dr, Suite Q, Monmouth Junction, NJ 08852, USA