



SZABO SCANDIC

Part of Europa Biosite

Produktinformation



Forschungsprodukte & Biochemikalien



Zellkultur & Verbrauchsmaterial



Diagnostik & molekulare Diagnostik



Laborgeräte & Service

Weitere Information auf den folgenden Seiten!
See the following pages for more information!



Lieferung & Zahlungsart

siehe unsere [Liefer- und Versandbedingungen](#)

Zuschläge

- Mindermengenzuschlag
- Trockeneiszuschlag
- Gefahrgutzuschlag
- Expressversand

SZABO-SCANDIC HandelsgmbH

Quellenstraße 110, A-1100 Wien

T. +43(0)1 489 3961-0

F. +43(0)1 489 3961-7

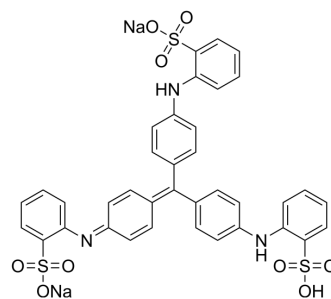
mail@szabo-scandic.com

www.szabo-scandic.com

[linkedin.com/company/szaboscandic](https://www.linkedin.com/company/szaboscandic) 

Methyl Blue

Cat. No.:	HY-D0003
CAS No.:	28983-56-4
Molecular Formula:	C ₃₇ H ₂₇ N ₃ Na ₂ O ₉ S ₃
Molecular Weight:	799.8
Target:	Fluorescent Dye
Pathway:	Others
Storage:	4°C, sealed storage, away from moisture and light * In solvent : -80°C, 6 months; -20°C, 1 month (sealed storage, away from moisture and light)



SOLVENT & SOLUBILITY

In Vitro	H ₂ O : 20 mg/mL (25.01 mM; Need ultrasonic)				
	Preparing Stock Solutions	Solvent \ Mass \ Concentration	1 mg	5 mg	10 mg
		1 mM	1.2503 mL	6.2516 mL	12.5031 mL
		5 mM	0.2501 mL	1.2503 mL	2.5006 mL
		10 mM	0.1250 mL	0.6252 mL	1.2503 mL
Please refer to the solubility information to select the appropriate solvent.					
In Vivo	1. Add each solvent one by one: PBS Solubility: 16.67 mg/mL (20.84 mM); Clear solution; Need ultrasonic				

BIOLOGICAL ACTIVITY

Description	Methyl blue belongs to the group of triaminotriphenylmethane dyes. Methyl blue is widely used as antiseptic dye in polychrome staining method and has applications in histological and microbiological staining solutions. Methyl blue has been used as a model to study the effect of various catalysts on photodegradation of dyes ^{[1][2]} .
--------------------	--

REFERENCES

- [1]. Mohammed Hassan, et al. Micellar effect on the kinetics of oxidation of methyl blue by Ce(IV) in sulfuric acid medium. Arabian Journal of Chemistry. Volume 8, Issue 1, January 2015, Pages 72-77.
- [2]. K.Kotak, et al. Photostability of Aniline Blue (CI 42755) and Methyl Blue (CI 42780). Dyes and Pigments. Volume 34, Issue 2, June 1997, Pages 159-167.

Caution: Product has not been fully validated for medical applications. For research use only.

Tel: 609-228-6898

Fax: 609-228-5909

E-mail: tech@MedChemExpress.com

Address: 1 Deer Park Dr, Suite Q, Monmouth Junction, NJ 08852, USA