



SZABO SCANDIC

Part of Europa Biosite

Produktinformation



Forschungsprodukte & Biochemikalien



Zellkultur & Verbrauchsmaterial



Diagnostik & molekulare Diagnostik



Laborgeräte & Service

Weitere Information auf den folgenden Seiten!
See the following pages for more information!



Lieferung & Zahlungsart

siehe unsere [Liefer- und Versandbedingungen](#)

Zuschläge

- Mindermengenzuschlag
- Trockeneiszuschlag
- Gefahrgutzuschlag
- Expressversand

SZABO-SCANDIC HandelsgmbH

Quellenstraße 110, A-1100 Wien

T. +43(0)1 489 3961-0

F. +43(0)1 489 3961-7

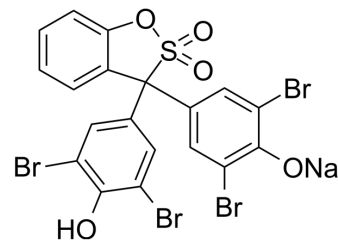
mail@szabo-scandic.com

www.szabo-scandic.com

[linkedin.com/company/szaboscandic](https://www.linkedin.com/company/szaboscandic) 

Bromophenol blue sodium

Cat. No.:	HY-D0011
CAS No.:	62625-28-9
Molecular Formula:	C ₁₉ H ₉ Br ₄ NaO ₅ S
Molecular Weight:	691.94
Target:	Biochemical Assay Reagents
Pathway:	Others
Storage:	4°C, sealed storage, away from moisture * In solvent : -80°C, 6 months; -20°C, 1 month (sealed storage, away from moisture)



SOLVENT & SOLUBILITY

In Vitro

DMSO : 50 mg/mL (72.26 mM; Need ultrasonic)

Concentration	Solvent	Mass		
		1 mg	5 mg	10 mg
Preparing Stock Solutions	1 mM	1.4452 mL	7.2261 mL	14.4521 mL
	5 mM	0.2890 mL	1.4452 mL	2.8904 mL
	10 mM	0.1445 mL	0.7226 mL	1.4452 mL

Please refer to the solubility information to select the appropriate solvent.

BIOLOGICAL ACTIVITY

Description

Bromophenol blue sodium is a pH indicator. It changes from yellow at pH 3.0 to blue at pH 4.6. Bromophenol blue sodium is also used as a tracking dye to monitor the process of agarose gel electrophoresis and polyacrylamide gel electrophoresis^[1] [2].

REFERENCES

- [1]. Shokrollahi A, Zare E. Determination of acidity constants of bromophenol blue and phenol red indicators by solution scanometric method and comparison with spectrophotometric results. *Journal of Molecular Liquids*, 2016, 219: 1165-1171.
- [2]. Gish G, Eckstein F. DNA and RNA sequence determination based on phosphorothioate chemistry. *Science*. 1988 Jun 10;240(4858):1520-2.

Caution: Product has not been fully validated for medical applications. For research use only.

Tel: 609-228-6898

Fax: 609-228-5909

E-mail: tech@MedChemExpress.com

Address: 1 Deer Park Dr, Suite Q, Monmouth Junction, NJ 08852, USA