



# SZABO SCANDIC

Part of Europa Biosite

## Produktinformation



Forschungsprodukte & Biochemikalien



Zellkultur & Verbrauchsmaterial



Diagnostik & molekulare Diagnostik



Laborgeräte & Service

Weitere Information auf den folgenden Seiten!  
See the following pages for more information!



### Lieferung & Zahlungsart

siehe unsere [Liefer- und Versandbedingungen](#)

### Zuschläge

- Mindermengenzuschlag
- Trockeneiszuschlag
- Gefahrgutzuschlag
- Expressversand

### SZABO-SCANDIC HandelsgmbH

Quellenstraße 110, A-1100 Wien

T. +43(0)1 489 3961-0

F. +43(0)1 489 3961-7

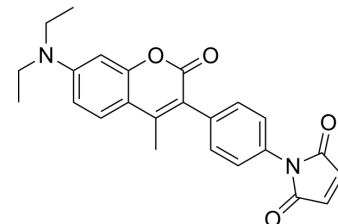
[mail@szabo-scandic.com](mailto:mail@szabo-scandic.com)

[www.szabo-scandic.com](http://www.szabo-scandic.com)

[linkedin.com/company/szaboscandic](https://www.linkedin.com/company/szaboscandic) 

## CPM

Cat. No.:	HY-D0069
CAS No.:	76877-33-3
Molecular Formula:	C <sub>24</sub> H <sub>22</sub> N <sub>2</sub> O <sub>4</sub>
Molecular Weight:	402.44
Target:	Fluorescent Dye
Pathway:	Others
Storage:	-20°C, protect from light * In solvent : -80°C, 6 months; -20°C, 1 month (protect from light)



## SOLVENT & SOLUBILITY

### In Vitro

DMSO : 25 mg/mL (62.12 mM; Need ultrasonic)

Concentration	Solvent	Mass		
		1 mg	5 mg	10 mg
Preparing Stock Solutions	1 mM	2.4848 mL	12.4242 mL	24.8484 mL
	5 mM	0.4970 mL	2.4848 mL	4.9697 mL
	10 mM	0.2485 mL	1.2424 mL	2.4848 mL

Please refer to the solubility information to select the appropriate solvent.

## BIOLOGICAL ACTIVITY

### Description

CPM is a maleimide derivative, acting as a blue fluorescent thiol-reactive dye. The excitation/emission maxima is 384/470 nm<sup>[1]</sup>.

## REFERENCES

[1]. Grossman SH. Resonance energy transfer between the active sites of myocardial-type creatine kinase (isozyme MB). *Biochemistry*. 1983 Nov 8;22(23):5369-75.

**Caution: Product has not been fully validated for medical applications. For research use only.**

Tel: 609-228-6898

Fax: 609-228-5909

E-mail: tech@MedChemExpress.com

Address: 1 Deer Park Dr, Suite Q, Monmouth Junction, NJ 08852, USA