



SZABO SCANDIC

Part of Europa Biosite

Produktinformation



Forschungsprodukte & Biochemikalien



Zellkultur & Verbrauchsmaterial



Diagnostik & molekulare Diagnostik



Laborgeräte & Service

Weitere Information auf den folgenden Seiten!
See the following pages for more information!



Lieferung & Zahlungsart

siehe unsere [Liefer- und Versandbedingungen](#)

Zuschläge

- Mindermengenzuschlag
- Trockeneiszuschlag
- Gefahrgutzuschlag
- Expressversand

SZABO-SCANDIC HandelsgmbH

Quellenstraße 110, A-1100 Wien

T. +43(0)1 489 3961-0

F. +43(0)1 489 3961-7

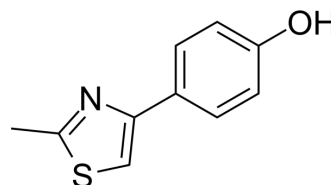
mail@szabo-scandic.com

www.szabo-scandic.com

[linkedin.com/company/szaboscandic](https://www.linkedin.com/company/szaboscandic) 

4-(2-Methyl-4-thiazolyl)phenol

Cat. No.:	HY-D0126
CAS No.:	30686-73-8
Molecular Formula:	C ₁₀ H ₉ NOS
Molecular Weight:	191.25
Target:	Biochemical Assay Reagents
Pathway:	Others
Storage:	4°C, stored under nitrogen * In solvent : -80°C, 6 months; -20°C, 1 month (stored under nitrogen)



SOLVENT & SOLUBILITY

In Vitro	DMSO : 50 mg/mL (261.44 mM; ultrasonic and warming and heat to 60°C)					
	Preparing Stock Solutions	Solvent Concentration	Mass	1 mg	5 mg	10 mg
			1 mM	5.2288 mL	26.1438 mL	52.2876 mL
			5 mM	1.0458 mL	5.2288 mL	10.4575 mL
			10 mM	0.5229 mL	2.6144 mL	5.2288 mL
Please refer to the solubility information to select the appropriate solvent.						
In Vivo	1. Add each solvent one by one: 10% DMSO >> 40% PEG300 >> 5% Tween-80 >> 45% saline Solubility: ≥ 1 mg/mL (5.23 mM); Clear solution					
	2. Add each solvent one by one: 10% DMSO >> 90% (20% SBE-β-CD in saline) Solubility: ≥ 1 mg/mL (5.23 mM); Clear solution					
	3. Add each solvent one by one: 10% DMSO >> 90% corn oil Solubility: ≥ 1 mg/mL (5.23 mM); Clear solution					

BIOLOGICAL ACTIVITY

Description	4-(2-Methylthiazol-4-yl)phenol is a biochemical reagent that can be used as a biological material or organic compound for life science related research.
-------------	--

Caution: Product has not been fully validated for medical applications. For research use only.

Tel: 609-228-6898

Fax: 609-228-5909

E-mail: tech@MedChemExpress.com

Address: 1 Deer Park Dr, Suite Q, Monmouth Junction, NJ 08852, USA