



SZABO SCANDIC

Part of Europa Biosite

Produktinformation



Forschungsprodukte & Biochemikalien



Zellkultur & Verbrauchsmaterial



Diagnostik & molekulare Diagnostik



Laborgeräte & Service

Weitere Information auf den folgenden Seiten!
See the following pages for more information!



Lieferung & Zahlungsart

siehe unsere [Liefer- und Versandbedingungen](#)

Zuschläge

- Mindermengenzuschlag
- Trockeneiszuschlag
- Gefahrgutzuschlag
- Expressversand

SZABO-SCANDIC HandelsgmbH

Quellenstraße 110, A-1100 Wien

T. +43(0)1 489 3961-0

F. +43(0)1 489 3961-7

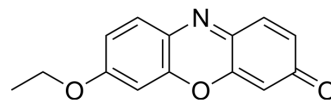
mail@szabo-scandic.com

www.szabo-scandic.com

[linkedin.com/company/szaboscandic](https://www.linkedin.com/company/szaboscandic) 

7-Ethoxyresorufin

Cat. No.:	HY-D0145
CAS No.:	5725-91-7
Molecular Formula:	C ₁₄ H ₁₁ NO ₃
Molecular Weight:	241.24
Target:	Cytochrome P450; NO Synthase
Pathway:	Metabolic Enzyme/Protease; Immunology/Inflammation
Storage:	-20°C, protect from light * In solvent : -80°C, 6 months; -20°C, 1 month (protect from light)



SOLVENT & SOLUBILITY

In Vitro

DMF : 2 mg/mL (8.29 mM); ultrasonic and warming and heat to 60°C

Solvent	Mass	Concentration		
		1 mg	5 mg	10 mg
Preparing Stock Solutions	1 mM	4.1452 mL	20.7262 mL	41.4525 mL
	5 mM	0.8290 mL	4.1452 mL	8.2905 mL
	10 mM	---	---	---

Please refer to the solubility information to select the appropriate solvent.

BIOLOGICAL ACTIVITY

Description

7-Ethoxyresorufin (Resorufin ethyl ether) is a fluorometric substrate and competitive inhibitor of cytochrome P450, especially CYP1A1. 7-Ethoxyresorufin also inhibits NO synthase^{[1][2]}.

IC₅₀ & Target

CYP1

REFERENCES

[1]. C G Li, et al. Inhibition of NO-medicate responses by 7-ethoxyresorufin, a substrate and competitive inhibitor of cytochrome P450. Br J Pharmacol. 1996 May;118(1):57-62.

[2]. Thomas K H Chang, et al. Enzymatic analysis of cDNA-expressed human CYP1A1, CYP1A2, and CYP1B1 with 7-ethoxyresorufin as substrate. Methods Mol Biol. 2006;320:85-90.

Caution: Product has not been fully validated for medical applications. For research use only.

Tel: 609-228-6898

Fax: 609-228-5909

E-mail: tech@MedChemExpress.com

Address: 1 Deer Park Dr, Suite Q, Monmouth Junction, NJ 08852, USA