



SZABO SCANDIC

Part of Europa Biosite

Produktinformation



Forschungsprodukte & Biochemikalien



Zellkultur & Verbrauchsmaterial



Diagnostik & molekulare Diagnostik



Laborgeräte & Service

Weitere Information auf den folgenden Seiten!
See the following pages for more information!



Lieferung & Zahlungsart

siehe unsere [Liefer- und Versandbedingungen](#)

Zuschläge

- Mindermengenzuschlag
- Trockeneiszuschlag
- Gefahrgutzuschlag
- Expressversand

SZABO-SCANDIC HandelsgmbH

Quellenstraße 110, A-1100 Wien

T. +43(0)1 489 3961-0

F. +43(0)1 489 3961-7

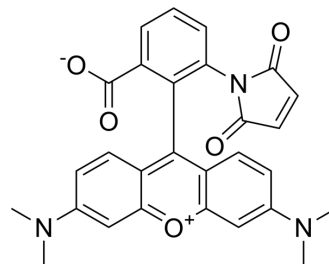
mail@szabo-scandic.com

www.szabo-scandic.com

[linkedin.com/company/szaboscandic](https://www.linkedin.com/company/szaboscandic) 

Tetramethylrhodamine-6-maleimide

| | |
|--------------------|---|
| Cat. No.: | HY-D0152 |
| CAS No.: | 174568-68-4 |
| Molecular Formula: | C ₂₈ H ₂₃ N ₃ O ₅ |
| Molecular Weight: | 481.5 |
| Target: | Fluorescent Dye |
| Pathway: | Others |
| Storage: | Please store the product under the recommended conditions in the Certificate of Analysis. |



BIOLOGICAL ACTIVITY

Description

Tetramethylrhodamine-6-maleimide is a fluorescent dye with a reactive sulfhydryl-specific moiety is covalently coupled to this cysteine. Tetramethylrhodamine-6-maleimide can be used as labels to detect local protein motions of the fully active Na⁺/K⁺-ATPase in real time^{[1][2]}.

REFERENCES

- [1]. Geibel S, et al. Conformational dynamics of the Na⁺/K⁺-ATPase probed by voltage clamp fluorometry. Proc Natl Acad Sci U S A. 2003 Feb 4;100(3):964-9.
- [2]. Loo DD, et al. Conformational changes couple Na⁺ and glucose transport. Proc Natl Acad Sci U S A. 1998 Jun 23;95(13):7789-94.

Caution: Product has not been fully validated for medical applications. For research use only.

Tel: 609-228-6898

Fax: 609-228-5909

E-mail: tech@MedChemExpress.com

Address: 1 Deer Park Dr, Suite Q, Monmouth Junction, NJ 08852, USA