



SZABO SCANDIC

Part of Europa Biosite

Produktinformation



Forschungsprodukte & Biochemikalien



Zellkultur & Verbrauchsmaterial



Diagnostik & molekulare Diagnostik



Laborgeräte & Service

Weitere Information auf den folgenden Seiten!
See the following pages for more information!



Lieferung & Zahlungsart

siehe unsere [Liefer- und Versandbedingungen](#)

Zuschläge

- Mindermengenzuschlag
- Trockeneiszuschlag
- Gefahrgutzuschlag
- Expressversand

SZABO-SCANDIC HandelsgmbH

Quellenstraße 110, A-1100 Wien

T. +43(0)1 489 3961-0

F. +43(0)1 489 3961-7

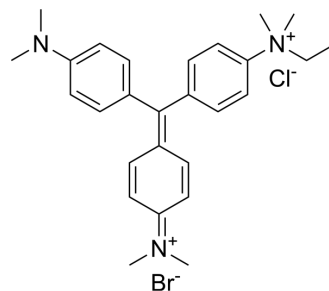
mail@szabo-scandic.com

www.szabo-scandic.com

[linkedin.com/company/szaboscandic](https://www.linkedin.com/company/szaboscandic) 

Methyl Green

Cat. No.:	HY-D0163
CAS No.:	14855-76-6
Molecular Formula:	C ₂₇ H ₃₅ BrClN ₃
Molecular Weight:	516.94
Target:	DNA Stain
Pathway:	Cell Cycle/DNA Damage
Storage:	4°C, sealed storage, away from moisture and light * In solvent : -80°C, 6 months; -20°C, 1 month (sealed storage, away from moisture and light)



SOLVENT & SOLUBILITY

In Vitro	DMSO : 125 mg/mL (241.81 mM; Need ultrasonic)				
		Solvent Concentration	Mass 1 mg	5 mg	10 mg
	Preparing Stock Solutions	1 mM	1.9345 mL	9.6723 mL	19.3446 mL
		5 mM	0.3869 mL	1.9345 mL	3.8689 mL
10 mM		0.1934 mL	0.9672 mL	1.9345 mL	
Please refer to the solubility information to select the appropriate solvent.					
In Vivo	1. Add each solvent one by one: 10% DMSO >> 40% PEG300 >> 5% Tween-80 >> 45% saline Solubility: ≥ 2.08 mg/mL (4.02 mM); Clear solution 2. Add each solvent one by one: 10% DMSO >> 90% (20% SBE-β-CD in saline) Solubility: ≥ 2.08 mg/mL (4.02 mM); Clear solution				

BIOLOGICAL ACTIVITY

Description	Methyl Green is a potent fluorescent dye. Methyl Green is a DNA stains of cells and electrophoretic gels. Methyl Green can be used as a stain for direct measuring of viability by both microscopy and flow cytometry, with peaks at 633 and 677 nm ^{[1][2]} .
--------------------	---

REFERENCES

- [1]. Prieto D, et, al. A fast, low cost, and highly efficient fluorescent DNA labeling method using methyl green. *Histochem Cell Biol.* 2014 Sep;142(3):335-45.
- [2]. Kim SK, et, al. Methyl green. A DNA major-groove binding drug. *FEBS Lett.* 1993 Jan 2;315(1):61-4.

Caution: Product has not been fully validated for medical applications. For research use only.

Tel: 609-228-6898

Fax: 609-228-5909

E-mail: tech@MedChemExpress.com

Address: 1 Deer Park Dr, Suite Q, Monmouth Junction, NJ 08852, USA