



SZABO SCANDIC

Part of Europa Biosite

Produktinformation



Forschungsprodukte & Biochemikalien



Zellkultur & Verbrauchsmaterial



Diagnostik & molekulare Diagnostik



Laborgeräte & Service

Weitere Information auf den folgenden Seiten!
See the following pages for more information!



Lieferung & Zahlungsart

siehe unsere [Liefer- und Versandbedingungen](#)

Zuschläge

- Mindermengenzuschlag
- Trockeneiszuschlag
- Gefahrgutzuschlag
- Expressversand

SZABO-SCANDIC HandelsgmbH

Quellenstraße 110, A-1100 Wien

T. +43(0)1 489 3961-0

F. +43(0)1 489 3961-7

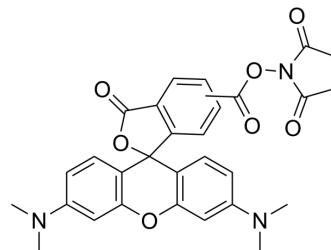
mail@szabo-scandic.com

www.szabo-scandic.com

[linkedin.com/company/szaboscandic](https://www.linkedin.com/company/szaboscandic) 

NHS-5(6)Carboxyrhodamine

| | |
|---------------------------|---|
| Cat. No.: | HY-D0167 |
| CAS No.: | 150408-83-6 |
| Molecular Formula: | C ₂₉ H ₂₅ N ₃ O ₇ |
| Molecular Weight: | 527.53 |
| Target: | Fluorescent Dye |
| Pathway: | Others |
| Storage: | Please store the product under the recommended conditions in the Certificate of Analysis. |



BIOLOGICAL ACTIVITY

| | |
|--------------------|--|
| Description | NHS-5(6)Carboxyrhodamine is a dye used for fluorescence labeling applications, where accurate dye/protein ratios can be obtained under native conditions ^[1] . |
| In Vitro | A general characteristic for all of the NHS-5(6)Carboxyrhodamine/ConA samples is that the 556 nm peak is significantly larger relative to the 520 nm peak ^[1] . Dye/protein ratios for NHS-5(6)Carboxyrhodamine under native conditions are close to the ratios obtained under denaturing conditions ^[1] . MCE has not independently confirmed the accuracy of these methods. They are for reference only. |

REFERENCES

[1]. D L Meadows, et al. Determining the extent of labeling for tetramethylrhodamine protein conjugates. J Immunol Methods. 1991 Oct 25;143(2):263-72.

Caution: Product has not been fully validated for medical applications. For research use only.

Tel: 609-228-6898

Fax: 609-228-5909

E-mail: tech@MedChemExpress.com

Address: 1 Deer Park Dr, Suite Q, Monmouth Junction, NJ 08852, USA