



SZABO SCANDIC

Part of Europa Biosite

Produktinformation



Forschungsprodukte & Biochemikalien



Zellkultur & Verbrauchsmaterial



Diagnostik & molekulare Diagnostik



Laborgeräte & Service

Weitere Information auf den folgenden Seiten!
See the following pages for more information!



Lieferung & Zahlungsart

siehe unsere [Liefer- und Versandbedingungen](#)

Zuschläge

- Mindermengenzuschlag
- Trockeneiszuschlag
- Gefahrgutzuschlag
- Expressversand

SZABO-SCANDIC HandelsgmbH

Quellenstraße 110, A-1100 Wien

T. +43(0)1 489 3961-0

F. +43(0)1 489 3961-7

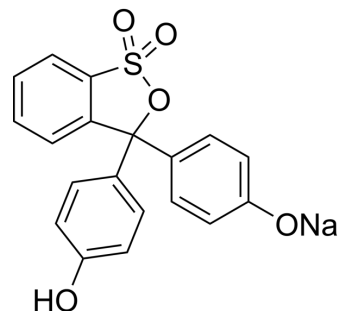
mail@szabo-scandic.com

www.szabo-scandic.com

[linkedin.com/company/szaboscandic](https://www.linkedin.com/company/szaboscandic) 

Phenol Red sodium salt

Cat. No.:	HY-D0169A
CAS No.:	34487-61-1
Molecular Formula:	C ₁₉ H ₁₃ NaO ₅ S
Molecular Weight:	376.36
Target:	Fluorescent Dye
Pathway:	Others
Storage:	4°C, sealed storage, away from moisture and light * In solvent : -80°C, 6 months; -20°C, 1 month (sealed storage, away from moisture and light)



SOLVENT & SOLUBILITY

In Vitro

DMSO : 5 mg/mL (13.29 mM; Need ultrasonic)
H₂O : < 0.1 mg/mL (insoluble)

Concentration	Mass		
	1 mg	5 mg	10 mg
1 mM	2.6570 mL	13.2852 mL	26.5703 mL
5 mM	0.5314 mL	2.6570 mL	5.3141 mL
10 mM	0.2657 mL	1.3285 mL	2.6570 mL

Please refer to the solubility information to select the appropriate solvent.

BIOLOGICAL ACTIVITY

Description

Phenol red (Phenolsulfonephthalein) sodium salt is a pH indicator dye, relying on a distinct color change from pink to yellow in case of a positive reaction^[1] ^[2].

PROTOCOL

Cell Assay ^[1]^[2]

Phenol red is dissolved in 0.1% ethanol. To determine the effect of phenol red on cell proliferation, MCF-7 cells grown for 1 week before experiments in phenol red-free MEM supplemented are harvested and seeded into T-25 flasks (ca. 1.5 x 10⁵ cells per flask). The following day, cells from three flasks are harvested and counted with a Coulter Counter. Then the medium is changed to phenol red- and insulin-free MEM, which contains various concentrations of dextran-coated charcoal-treated calf serum, phenol red (0-300 μM), tamoxifen, hydroxytamoxifen, estradiol, or ethanol vehicle (0.1%), and cell number is monitored as a function of time^[1]. Phenol Red sodium salt is dissolved in distilled water as a 10 g/L stock solution^[2]. MCE has not independently confirmed the accuracy of these methods. They are for reference only.

REFERENCES

[1]. Morgan A, et al. Caution for the routine use of phenol red - It is more than just a pH indicator. Chem Biol Interact. 2019;310:108739.

[2]. Peltzer D, et al. Rapid and simple colorimetric loop-mediated isothermal amplification (LAMP) assay for the detection of Bovine alphaherpesvirus 1. J Virol Methods. 2021;289:114041.

Caution: Product has not been fully validated for medical applications. For research use only.

Tel: 609-228-6898

Fax: 609-228-5909

E-mail: tech@MedChemExpress.com

Address: 1 Deer Park Dr, Suite Q, Monmouth Junction, NJ 08852, USA