



SZABO SCANDIC

Part of Europa Biosite

Produktinformation



Forschungsprodukte & Biochemikalien



Zellkultur & Verbrauchsmaterial



Diagnostik & molekulare Diagnostik



Laborgeräte & Service

Weitere Information auf den folgenden Seiten!
See the following pages for more information!



Lieferung & Zahlungsart

siehe unsere [Liefer- und Versandbedingungen](#)

Zuschläge

- Mindermengenzuschlag
- Trockeneiszuschlag
- Gefahrgutzuschlag
- Expressversand

SZABO-SCANDIC HandelsgmbH

Quellenstraße 110, A-1100 Wien

T. +43(0)1 489 3961-0

F. +43(0)1 489 3961-7

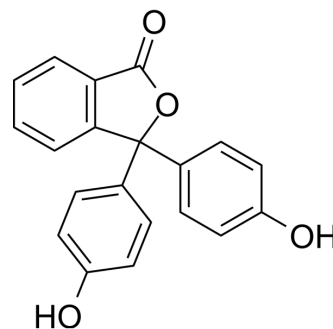
mail@szabo-scandic.com

www.szabo-scandic.com

[linkedin.com/company/szaboscandic](https://www.linkedin.com/company/szaboscandic) 

Phenolphthalein

| | |
|--------------------|------------------------------------------------------------------------------------------------|
| Cat. No.: | HY-D0211 |
| CAS No.: | 77-09-8 |
| Molecular Formula: | C ₂₀ H ₁₄ O ₄ |
| Molecular Weight: | 318.32 |
| Target: | Fluorescent Dye |
| Pathway: | Others |
| Storage: | 4°C, protect from light * In solvent : -80°C, 6 months; -20°C, 1 month (protect from light) |



SOLVENT & SOLUBILITY

In Vitro

DMSO : ≥ 50 mg/mL (157.07 mM)
* "≥" means soluble, but saturation unknown.

| Preparing Stock Solutions | Solvent Concentration | Mass | | |
|---------------------------|-----------------------|-----------|------------|------------|
| | | 1 mg | 5 mg | 10 mg |
| | 1 mM | 3.1415 mL | 15.7075 mL | 31.4149 mL |
| | 5 mM | 0.6283 mL | 3.1415 mL | 6.2830 mL |
| | 10 mM | 0.3141 mL | 1.5707 mL | 3.1415 mL |

Please refer to the solubility information to select the appropriate solvent.

In Vivo

- Add each solvent one by one: 10% DMSO >> 40% PEG300 >> 5% Tween-80 >> 45% saline
Solubility: 2.5 mg/mL (7.85 mM); Clear solution; Need ultrasonic
- Add each solvent one by one: 10% DMSO >> 90% (20% SBE-β-CD in saline)
Solubility: 2.5 mg/mL (7.85 mM); Clear solution; Need ultrasonic
- Add each solvent one by one: 10% DMSO >> 90% corn oil
Solubility: 2.5 mg/mL (7.85 mM); Clear solution; Need ultrasonic

BIOLOGICAL ACTIVITY

Description

Phenolphthalein is a widely applied but toxic indicator dye.

REFERENCES

[1]. Fleischmann C, et al. Color indicator for supramolecular polymer chemistry: phenolphthalein-containing thermo- and pH-sensitive N-(Isopropyl)acrylamide copolymers and β-cyclodextrin complexation. *Macromol Rapid Commun.* 2013 Jul 12;34(13):1085-9.

Caution: Product has not been fully validated for medical applications. For research use only.

Tel: 609-228-6898

Fax: 609-228-5909

E-mail: tech@MedChemExpress.com

Address: 1 Deer Park Dr, Suite Q, Monmouth Junction, NJ 08852, USA