



SZABO SCANDIC

Part of Europa Biosite

Produktinformation



Forschungsprodukte & Biochemikalien



Zellkultur & Verbrauchsmaterial



Diagnostik & molekulare Diagnostik



Laborgeräte & Service

Weitere Information auf den folgenden Seiten!
See the following pages for more information!



Lieferung & Zahlungsart

siehe unsere [Liefer- und Versandbedingungen](#)

Zuschläge

- Mindermengenzuschlag
- Trockeneiszuschlag
- Gefahrgutzuschlag
- Expressversand

SZABO-SCANDIC HandelsgmbH

Quellenstraße 110, A-1100 Wien

T. +43(0)1 489 3961-0

F. +43(0)1 489 3961-7

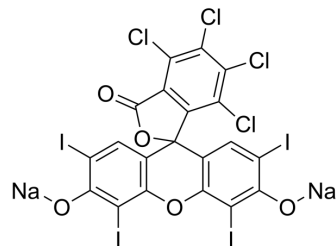
mail@szabo-scandic.com

www.szabo-scandic.com

[linkedin.com/company/szaboscandic](https://www.linkedin.com/company/szaboscandic) 

Rose Bengal sodium (Standard)

Cat. No.:	HY-D0214R
CAS No.:	632-69-9
Molecular Formula:	C ₂₀ H ₂ Cl ₄ I ₄ Na ₂ O ₅
Molecular Weight:	1017.64
Target:	Influenza Virus
Pathway:	Anti-infection
Storage:	Please store the product under the recommended conditions in the Certificate of Analysis.



BIOLOGICAL ACTIVITY

Description

Rose Bengal (sodium) (Standard) is the analytical standard of Rose Bengal (sodium). This product is intended for research and analytical applications. Rose Bengal sodium, a synthetic fluorescein derivative, and is a crimson-coloured dye with the principal component being 4,5,6,7-tetrachloro-2,4,5,7-tetraiodo fluorescein. Rose Bengal sodium has been widely used as an ophthalmic diagnostic agents, and can detect desiccated or damaged cells on the ocular surface. Rose Bengal sodium exhibits antiviral activities^{[1][2]}.

REFERENCES

- [1]. Doughty MJ, et, al. Fluorescence characteristics of sodium fluorescein-rose bengal ophthalmic solution mixtures. Cont Lens Anterior Eye. 2014 Oct; 37(5): 358-62.
- [2]. Roat MI, et, al. The antiviral effects of rose bengal and fluorescein. Arch Ophthalmol. 1987 Oct; 105(10): 1415-7.

Caution: Product has not been fully validated for medical applications. For research use only.

Tel: 609-228-6898

Fax: 609-228-5909

E-mail: tech@MedChemExpress.com

Address: 1 Deer Park Dr, Suite Q, Monmouth Junction, NJ 08852, USA