



SZABO SCANDIC

Part of Europa Biosite

Produktinformation



Forschungsprodukte & Biochemikalien



Zellkultur & Verbrauchsmaterial



Diagnostik & molekulare Diagnostik



Laborgeräte & Service

Weitere Information auf den folgenden Seiten!
See the following pages for more information!



Lieferung & Zahlungsart

siehe unsere [Liefer- und Versandbedingungen](#)

Zuschläge

- Mindermengenzuschlag
- Trockeneiszuschlag
- Gefahrgutzuschlag
- Expressversand

SZABO-SCANDIC HandelsgmbH

Quellenstraße 110, A-1100 Wien

T. +43(0)1 489 3961-0

F. +43(0)1 489 3961-7

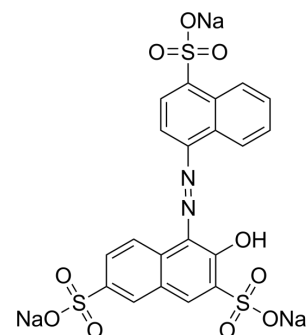
mail@szabo-scandic.com

www.szabo-scandic.com

[linkedin.com/company/szaboscandic](https://www.linkedin.com/company/szaboscandic) 

Amaranth

| | |
|--------------------|--|
| Cat. No.: | HY-D0307A |
| CAS No.: | 915-67-3 |
| Molecular Formula: | C ₂₀ H ₁₁ N ₂ Na ₃ O ₁₀ S ₃ |
| Molecular Weight: | 604.47 |
| Target: | Fluorescent Dye |
| Pathway: | Others |
| Storage: | 4°C, sealed storage, away from moisture and light * In solvent : -80°C, 6 months; -20°C, 1 month (sealed storage, away from moisture and light) |



SOLVENT & SOLUBILITY

In Vitro

DMSO : 25 mg/mL (41.36 mM; Need ultrasonic)
H₂O : 6.67 mg/mL (11.03 mM; Need ultrasonic)

| Preparing Stock Solutions | Solvent Concentration | Mass | | |
|---------------------------|-----------------------|-----------|-----------|------------|
| | | 1 mg | 5 mg | 10 mg |
| | 1 mM | 1.6543 mL | 8.2717 mL | 16.5434 mL |
| | 5 mM | 0.3309 mL | 1.6543 mL | 3.3087 mL |
| | 10 mM | 0.1654 mL | 0.8272 mL | 1.6543 mL |

Please refer to the solubility information to select the appropriate solvent.

In Vivo

- Add each solvent one by one: 10% DMSO >> 40% PEG300 >> 5% Tween-80 >> 45% saline
Solubility: ≥ 2.5 mg/mL (4.14 mM); Clear solution
- Add each solvent one by one: 10% DMSO >> 90% (20% SBE-β-CD in saline)
Solubility: ≥ 2.5 mg/mL (4.14 mM); Clear solution

BIOLOGICAL ACTIVITY

Description

Amaranth is a dark red to purple azo dye used as a food dye and to color cosmetics. Amaranth is an anionic dye. It can be applied to natural and synthetic fibers, leather, paper, and phenol-formaldehyde resins.

Caution: Product has not been fully validated for medical applications. For research use only.

Tel: 609-228-6898

Fax: 609-228-5909

E-mail: tech@MedChemExpress.com

Address: 1 Deer Park Dr, Suite Q, Monmouth Junction, NJ 08852, USA