



SZABO SCANDIC

Part of Europa Biosite

Produktinformation



Forschungsprodukte & Biochemikalien



Zellkultur & Verbrauchsmaterial



Diagnostik & molekulare Diagnostik



Laborgeräte & Service

Weitere Information auf den folgenden Seiten!
See the following pages for more information!



Lieferung & Zahlungsart

siehe unsere [Liefer- und Versandbedingungen](#)

Zuschläge

- Mindermengenzuschlag
- Trockeneiszuschlag
- Gefahrgutzuschlag
- Expressversand

SZABO-SCANDIC HandelsgmbH

Quellenstraße 110, A-1100 Wien

T. +43(0)1 489 3961-0

F. +43(0)1 489 3961-7

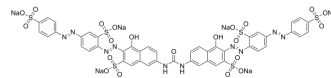
mail@szabo-scandic.com

www.szabo-scandic.com

[linkedin.com/company/szaboscandic](https://www.linkedin.com/company/szaboscandic) 

Direct Red 80

Cat. No.:	HY-D0333
CAS No.:	2610-10-8
Molecular Formula:	C ₄₅ H ₂₆ N ₁₀ Na ₆ O ₂₁ S ₆
Molecular Weight:	1373.07
Target:	Amyloid-β
Pathway:	Neuronal Signaling
Storage:	4°C, sealed storage, away from moisture * In solvent : -80°C, 6 months; -20°C, 1 month (sealed storage, away from moisture)



SOLVENT & SOLUBILITY

In Vitro	DMSO : < 1 mg/mL (ultrasonic;warming;heat to 60°C) (insoluble or slightly soluble)
-----------------	--

BIOLOGICAL ACTIVITY

Description	Direct Red 80 (Sirius Red) is a polyazo dye used principally in staining methods for collagen and amyloid. Direct Red 80 does not release benzidine upon degradation and is safer than many traditional direct dyes ^[1] .
In Vitro	Direct Red 80 (Sirius Red) has two important uses in histopathology: staining collagen from solution in saturated aqueous picric acid and staining amyloid from an alkaline solution. Stained structures are red ^[1] . Confocal laser microscopy (CLM) is also used to evaluate collagen production and distribution after Direct Red 80 staining. Direct Red 80 is not specific for the different types of collagen. Samples are washed in dH ₂ O, pretreats for 40 min with a solution of 0.2% phosphomolybdic acid (PMA) and incubates for 30 min in a solution consisting of 0.1% Direct red 80 diluted in saturated aqueous picric acid. Finally each sample is washed in 0.01 M HCl for 2 min. PMA is used to make colourless cytoplasm and HCl is used to remove non-specific staining ^[1] . MCE has not independently confirmed the accuracy of these methods. They are for reference only.

REFERENCES

[1]. Dapson RW, et al. Certification procedures for sirius red F3B (CI 35780, Direct red 80). Biotech Histochem. 2011;86(3):133-139.

Caution: Product has not been fully validated for medical applications. For research use only.

Tel: 609-228-6898

Fax: 609-228-5909

E-mail: tech@MedChemExpress.com

Address: 1 Deer Park Dr, Suite Q, Monmouth Junction, NJ 08852, USA