



# SZABO SCANDIC

Part of Europa Biosite

## Produktinformation



Forschungsprodukte & Biochemikalien



Zellkultur & Verbrauchsmaterial



Diagnostik & molekulare Diagnostik



Laborgeräte & Service

Weitere Information auf den folgenden Seiten!  
See the following pages for more information!



### Lieferung & Zahlungsart

siehe unsere [Liefer- und Versandbedingungen](#)

### Zuschläge

- Mindermengenzuschlag
- Trockeneiszuschlag
- Gefahrgutzuschlag
- Expressversand

### SZABO-SCANDIC HandelsgmbH

Quellenstraße 110, A-1100 Wien

T. +43(0)1 489 3961-0

F. +43(0)1 489 3961-7

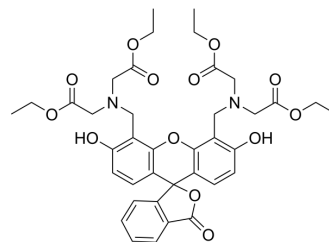
[mail@szabo-scandic.com](mailto:mail@szabo-scandic.com)

[www.szabo-scandic.com](http://www.szabo-scandic.com)

[linkedin.com/company/szaboscandic](https://www.linkedin.com/company/szaboscandic) 

## Calcein (tetraethyl ester)

Cat. No.:	HY-D0830
CAS No.:	1170856-93-5
Molecular Formula:	C <sub>38</sub> H <sub>42</sub> N <sub>2</sub> O <sub>13</sub>
Molecular Weight:	734.75
Target:	Fluorescent Dye
Pathway:	Others
Storage:	4°C, protect from light * In solvent : -80°C, 6 months; -20°C, 1 month (protect from light)



### SOLVENT & SOLUBILITY

In Vitro	DMSO : 25 mg/mL (34.03 mM; Need ultrasonic)					
	H <sub>2</sub> O : < 0.1 mg/mL (insoluble)					
	Preparing Stock Solutions	Solvent Concentration	Mass	1 mg	5 mg	10 mg
			1 mM	1.3610 mL	6.8050 mL	13.6101 mL
			5 mM	0.2722 mL	1.3610 mL	2.7220 mL
10 mM			0.1361 mL	0.6805 mL	1.3610 mL	
Please refer to the solubility information to select the appropriate solvent.						
In Vivo	1. Add each solvent one by one: 10% DMSO >> 40% PEG300 >> 5% Tween-80 >> 45% saline Solubility: ≥ 2.5 mg/mL (3.40 mM); Clear solution					

### BIOLOGICAL ACTIVITY

Description	Calcein tetraethyl ester is a fluorescent dye, is used in biology as it can be transported through the cellular membrane into live cells, which makes it useful for testing of cell viability and for short-term labeling of cells.
-------------	---

**Caution: Product has not been fully validated for medical applications. For research use only.**

Tel: 609-228-6898

Fax: 609-228-5909

E-mail: tech@MedChemExpress.com

Address: 1 Deer Park Dr, Suite Q, Monmouth Junction, NJ 08852, USA