



# SZABO SCANDIC

Part of Europa Biosite

## Produktinformation



Forschungsprodukte & Biochemikalien



Zellkultur & Verbrauchsmaterial



Diagnostik & molekulare Diagnostik



Laborgeräte & Service

Weitere Information auf den folgenden Seiten!  
See the following pages for more information!



### Lieferung & Zahlungsart

siehe unsere [Liefer- und Versandbedingungen](#)

### Zuschläge

- Mindermengenzuschlag
- Trockeneiszuschlag
- Gefahrgutzuschlag
- Expressversand

### SZABO-SCANDIC HandelsgmbH

Quellenstraße 110, A-1100 Wien

T. +43(0)1 489 3961-0

F. +43(0)1 489 3961-7

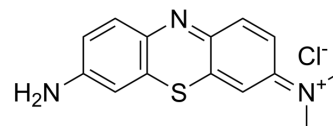
[mail@szabo-scandic.com](mailto:mail@szabo-scandic.com)

[www.szabo-scandic.com](http://www.szabo-scandic.com)

[linkedin.com/company/szaboscandic](https://www.linkedin.com/company/szaboscandic) 

## Giemsa stain

Cat. No.:	HY-D0944
CAS No.:	51811-82-6
Molecular Formula:	C <sub>14</sub> H <sub>14</sub> ClN <sub>3</sub> S
Molecular Weight:	291.8
Target:	Fluorescent Dye
Pathway:	Others
Storage:	4°C, protect from light * In solvent : -80°C, 6 months; -20°C, 1 month (protect from light)



### SOLVENT & SOLUBILITY

#### In Vitro

DMSO : ≥ 20.83 mg/mL (71.38 mM)  
\* "≥" means soluble, but saturation unknown.

Preparing Stock Solutions	Solvent Concentration	Mass	1 mg	5 mg	10 mg
	1 mM		3.4270 mL	17.1350 mL	34.2701 mL
	5 mM		0.6854 mL	3.4270 mL	6.8540 mL
	10 mM		0.3427 mL	1.7135 mL	3.4270 mL

Please refer to the solubility information to select the appropriate solvent.

### BIOLOGICAL ACTIVITY

#### Description

Giemsa stain can stain chromatin and nuclear membrane. Giemsa stain histopathologic detection of malaria and other microorganisms, such as Histoplasma, Leishmania, Toxoplasma, and Pneumocystis. Giemsa stain can be used in histology and microbiology<sup>[1]</sup>.

### REFERENCES

[1]. Dolan M. The role of the Giemsa stain in cytogenetics. Biotech Histochem. 2011 Apr;86(2):94-7.

**Caution: Product has not been fully validated for medical applications. For research use only.**

Tel: 609-228-6898

Fax: 609-228-5909

E-mail: tech@MedChemExpress.com

Address: 1 Deer Park Dr, Suite Q, Monmouth Junction, NJ 08852, USA