



SZABO SCANDIC

Part of Europa Biosite

Produktinformation



Forschungsprodukte & Biochemikalien



Zellkultur & Verbrauchsmaterial



Diagnostik & molekulare Diagnostik



Laborgeräte & Service

Weitere Information auf den folgenden Seiten!
See the following pages for more information!



Lieferung & Zahlungsart

siehe unsere [Liefer- und Versandbedingungen](#)

Zuschläge

- Mindermengenzuschlag
- Trockeneiszuschlag
- Gefahrgutzuschlag
- Expressversand

SZABO-SCANDIC HandelsgmbH

Quellenstraße 110, A-1100 Wien

T. +43(0)1 489 3961-0

F. +43(0)1 489 3961-7

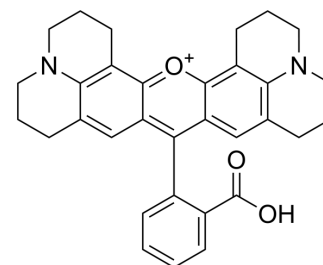
mail@szabo-scandic.com

www.szabo-scandic.com

[linkedin.com/company/szaboscandic](https://www.linkedin.com/company/szaboscandic) 

Rhodamine 101 chloride

Cat. No.:	HY-D1044
CAS No.:	64339-18-0
Molecular Formula:	C ₃₂ H ₃₁ ClN ₂ O ₃
Molecular Weight:	527.05
Target:	Fluorescent Dye
Pathway:	Others
Storage:	4°C, sealed storage, away from moisture and light * In solvent : -80°C, 6 months; -20°C, 1 month (sealed storage, away from moisture and light)



Cl⁻

SOLVENT & SOLUBILITY

In Vitro

Ethanol : 14.29 mg/mL (27.11 mM; Need ultrasonic)
H₂O : 2 mg/mL (3.79 mM; Need ultrasonic)

Preparing Stock Solutions	Solvent Concentration	Mass		
		1 mg	5 mg	10 mg
	1 mM	1.8974 mL	9.4868 mL	18.9735 mL
	5 mM	0.3795 mL	1.8974 mL	3.7947 mL
	10 mM	0.1897 mL	0.9487 mL	1.8974 mL

Please refer to the solubility information to select the appropriate solvent.

In Vivo

- Add each solvent one by one: 10% EtOH >> 40% PEG300 >> 5% Tween-80 >> 45% saline
Solubility: ≥ 1.43 mg/mL (2.71 mM); Clear solution
- Add each solvent one by one: 10% EtOH >> 90% (20% SBE-β-CD in saline)
Solubility: ≥ 1.43 mg/mL (2.71 mM); Clear solution
- Add each solvent one by one: 10% EtOH >> 90% corn oil
Solubility: ≥ 1.43 mg/mL (2.71 mM); Clear solution

BIOLOGICAL ACTIVITY

Description

Rhodamine 101 chloride (Rhodamine 640 chloride) is a bright fluorescent dye with excitation and emission maxima of 565 and 595 nm, respectively^[1].

REFERENCES

[1]. Aigner, D., et al. New fluorescent perylene bisimide indicators--a platform for broadband pH optodes. Anal. Bioanal. Chem. 400(8), 2475-2485 (2011).

Caution: Product has not been fully validated for medical applications. For research use only.

Tel: 609-228-6898

Fax: 609-228-5909

E-mail: tech@MedChemExpress.com

Address: 1 Deer Park Dr, Suite Q, Monmouth Junction, NJ 08852, USA