



SZABO SCANDIC

Part of Europa Biosite

Produktinformation



Forschungsprodukte & Biochemikalien



Zellkultur & Verbrauchsmaterial



Diagnostik & molekulare Diagnostik



Laborgeräte & Service

Weitere Information auf den folgenden Seiten!
See the following pages for more information!



Lieferung & Zahlungsart

siehe unsere [Liefer- und Versandbedingungen](#)

Zuschläge

- Mindermengenzuschlag
- Trockeneiszuschlag
- Gefahrgutzuschlag
- Expressversand

SZABO-SCANDIC HandelsgmbH

Quellenstraße 110, A-1100 Wien

T. +43(0)1 489 3961-0

F. +43(0)1 489 3961-7

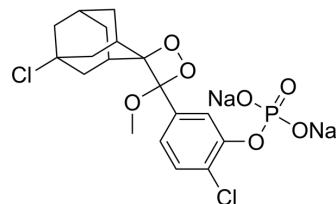
mail@szabo-scandic.com

www.szabo-scandic.com

[linkedin.com/company/szaboscandic](https://www.linkedin.com/company/szaboscandic) 

CDP-Star

Cat. No.:	HY-D1208
CAS No.:	160081-62-9
Molecular Formula:	C ₁₈ H ₁₉ Cl ₂ Na ₂ O ₇ P
Molecular Weight:	495.2
Target:	Biochemical Assay Reagents; Phosphatase
Pathway:	Others; Metabolic Enzyme/Protease
Storage:	Please store the product under the recommended conditions in the Certificate of Analysis.



BIOLOGICAL ACTIVITY

Description	CDP-Star is a chemiluminescent substrate for alkaline phosphatase. CDP-Star can be used for enzyme-linked immunoassays [1].
In Vitro	<p>Guidelines (Following is our recommended protocol. This protocol only provides a guideline, and should be modified according to your specific needs).</p> <ol style="list-style-type: none"> 1. The substance (phosphatase mimic) to be detected is mixed with chemiluminescent substrate CDP-star (25 μM) in 20 mM of HEPES buffer (pH 8.5). 2. Time-dependent CL intensities of the mixture was measured immediately at room temperature. <p>MCE has not independently confirmed the accuracy of these methods. They are for reference only.</p>

REFERENCES

[1]. Hu L, et al. Chemiluminescence of the Ce(IV)/CDP-Star System Based on the Phosphatase-like Activity of Ce(IV) Ions. ACS Omega. 2021 Feb 25;6(9):6379-6384.

Caution: Product has not been fully validated for medical applications. For research use only.

Tel: 609-228-6898

Fax: 609-228-5909

E-mail: tech@MedChemExpress.com

Address: 1 Deer Park Dr, Suite Q, Monmouth Junction, NJ 08852, USA