



SZABO SCANDIC

Part of Europa Biosite

Produktinformation



Forschungsprodukte & Biochemikalien



Zellkultur & Verbrauchsmaterial



Diagnostik & molekulare Diagnostik



Laborgeräte & Service

Weitere Information auf den folgenden Seiten!
See the following pages for more information!



Lieferung & Zahlungsart

siehe unsere [Liefer- und Versandbedingungen](#)

Zuschläge

- Mindermengenzuschlag
- Trockeneiszuschlag
- Gefahrgutzuschlag
- Expressversand

SZABO-SCANDIC HandelsgmbH

Quellenstraße 110, A-1100 Wien

T. +43(0)1 489 3961-0

F. +43(0)1 489 3961-7

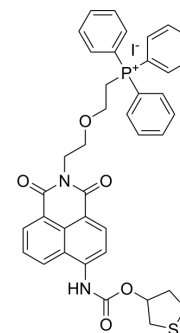
mail@szabo-scandic.com

www.szabo-scandic.com

[linkedin.com/company/szaboscandic](https://www.linkedin.com/company/szaboscandic) 

Mito-TRFS

Cat. No.:	HY-D1250
CAS No.:	1859102-62-7
Molecular Formula:	C ₃₈ H ₃₄ IN ₂ O ₅ PS ₂
Molecular Weight:	820.7
Target:	Fluorescent Dye
Pathway:	Others
Storage:	4°C, sealed storage, away from moisture and light * In solvent : -80°C, 6 months; -20°C, 1 month (sealed storage, away from moisture and light)



BIOLOGICAL ACTIVITY

Description	Mito-TRFS, the first off-on probe, is used to image the mitochondrial thioredoxin reductase (TrxR2) in live cells ^[1] .								
In Vitro	<p>Mito-TRFS (10 μM) has the maximal absorption at ~375 nm in TE buffer (50 mM Tris-HCl and 1 mM EDTA, pH 7.4) at 37 °C^[1]. Mito-TRFS itself has a strong emission at ~480 nm when excited at 375 nm in TE buffer (φ=0.34), but has weak emission when excited at 438 nm^[1].</p> <p>MCE has not independently confirmed the accuracy of these methods. They are for reference only.</p> <p>Immunofluorescence^[1].</p> <table border="1"> <tr> <td>Cell Line:</td> <td>HeLa cells.</td> </tr> <tr> <td>Concentration:</td> <td>1 μM.</td> </tr> <tr> <td>Incubation Time:</td> <td>2 h.</td> </tr> <tr> <td>Result:</td> <td>Mito-TRFS is localized predominantly in the mitochondria of live cells.</td> </tr> </table>	Cell Line:	HeLa cells.	Concentration:	1 μM.	Incubation Time:	2 h.	Result:	Mito-TRFS is localized predominantly in the mitochondria of live cells.
Cell Line:	HeLa cells.								
Concentration:	1 μM.								
Incubation Time:	2 h.								
Result:	Mito-TRFS is localized predominantly in the mitochondria of live cells.								

REFERENCES

[1]. Yaping Liu, et al. A small molecule probe reveals declined mitochondrial thioredoxin reductase activity in a Parkinson's disease model. Chem Commun (Camb). 2016 Feb 7;52(11):2296-9.

Caution: Product has not been fully validated for medical applications. For research use only.

Tel: 609-228-6898

Fax: 609-228-5909

E-mail: tech@MedChemExpress.com

Address: 1 Deer Park Dr, Suite Q, Monmouth Junction, NJ 08852, USA