



SZABO SCANDIC

Part of Europa Biosite

Produktinformation



Forschungsprodukte & Biochemikalien



Zellkultur & Verbrauchsmaterial



Diagnostik & molekulare Diagnostik



Laborgeräte & Service

Weitere Information auf den folgenden Seiten!
See the following pages for more information!



Lieferung & Zahlungsart

siehe unsere [Liefer- und Versandbedingungen](#)

Zuschläge

- Mindermengenzuschlag
- Trockeneiszuschlag
- Gefahrgutzuschlag
- Expressversand

SZABO-SCANDIC HandelsgmbH

Quellenstraße 110, A-1100 Wien

T. +43(0)1 489 3961-0

F. +43(0)1 489 3961-7

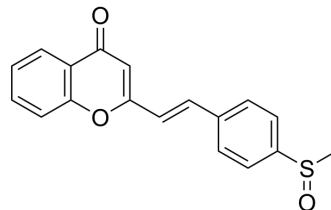
mail@szabo-scandic.com

www.szabo-scandic.com

[linkedin.com/company/szaboscandic](https://www.linkedin.com/company/szaboscandic) 

Msr-Ratio

| | |
|--------------------|---|
| Cat. No.: | HY-D1257 |
| CAS No.: | 2290635-22-0 |
| Molecular Formula: | C ₁₈ H ₁₄ O ₃ S |
| Molecular Weight: | 310.37 |
| Target: | Fluorescent Dye |
| Pathway: | Others |
| Storage: | Please store the product under the recommended conditions in the Certificate of Analysis. |



BIOLOGICAL ACTIVITY

| | |
|--------------------|--|
| Description | Msr-Ratio (Msr-green) is a ratiometric fluorescent probe of methionine sulfoxide reductase ($\lambda_{ex}=375$ nm, $\lambda_{em}=550$ nm). Msr-Ratio is used for monitoring the enzyme activity in vitro and in live cells ^[1] . |
| In Vitro | Msr-Ratio is converted to its corresponding sulfide form by methionine sulfoxide reductase. Msr-Ratio displays favorable properties such as a nearly 400-fold fluorescence change, fast response rate (<30 min), large Stokes shift (120 nm), and green emission (550 nm) ^[1] . There is a very weak background signal in live HL60 cells after the addition of Msr-Ratio. As the Msr-Ratio (10 μ M) incubation time increased in cells from 0 to 8 h, the fluorescence signal constantly strengthened ^[1] . MCE has not independently confirmed the accuracy of these methods. They are for reference only. |

REFERENCES

[1]. Liangwei Zhang, et al. A ratiometric fluorescent probe of methionine sulfoxide reductase with an improved response rate and emission wavelength. Chem Commun (Camb). 2019 Jan 29;55(10):1502-1505.

Caution: Product has not been fully validated for medical applications. For research use only.

Tel: 609-228-6898

Fax: 609-228-5909

E-mail: tech@MedChemExpress.com

Address: 1 Deer Park Dr, Suite Q, Monmouth Junction, NJ 08852, USA