



SZABO SCANDIC

Part of Europa Biosite

Produktinformation



Forschungsprodukte & Biochemikalien



Zellkultur & Verbrauchsmaterial



Diagnostik & molekulare Diagnostik



Laborgeräte & Service

Weitere Information auf den folgenden Seiten!
See the following pages for more information!



Lieferung & Zahlungsart

siehe unsere [Liefer- und Versandbedingungen](#)

Zuschläge

- Mindermengenzuschlag
- Trockeneiszuschlag
- Gefahrgutzuschlag
- Expressversand

SZABO-SCANDIC HandelsgmbH

Quellenstraße 110, A-1100 Wien

T. +43(0)1 489 3961-0

F. +43(0)1 489 3961-7

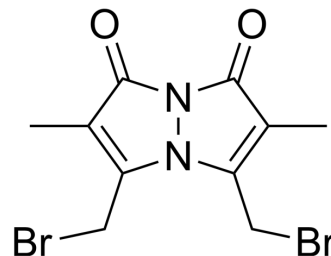
mail@szabo-scandic.com

www.szabo-scandic.com

[linkedin.com/company/szaboscandic](https://www.linkedin.com/company/szaboscandic) 

Dibromobimane

Cat. No.:	HY-D1423
CAS No.:	68654-25-1
Molecular Formula:	C ₁₀ H ₁₀ Br ₂ N ₂ O ₂
Molecular Weight:	350.01
Target:	Fluorescent Dye
Pathway:	Others
Storage:	-20°C, protect from light * In solvent : -80°C, 6 months; -20°C, 1 month (protect from light)



SOLVENT & SOLUBILITY

In Vitro	DMSO : 100 mg/mL (285.71 mM; Need ultrasonic)					
	Preparing Stock Solutions	Solvent Concentration	Mass			
			1 mg	5 mg	10 mg	
			1 mM	2.8571 mL	14.2853 mL	28.5706 mL
			5 mM	0.5714 mL	2.8571 mL	5.7141 mL
10 mM	0.2857 mL	1.4285 mL	2.8571 mL			
Please refer to the solubility information to select the appropriate solvent.						
In Vivo	1. Add each solvent one by one: 10% DMSO >> 40% PEG300 >> 5% Tween-80 >> 45% saline Solubility: ≥ 2.5 mg/mL (7.14 mM); Clear solution					

BIOLOGICAL ACTIVITY

Description	Dibromobimane is a thiol-selective fluorescent imaging agent. Dibromobimane is used to crosslink cysteine- and homocysteine-containing peptides ^[1] .
-------------	--

REFERENCES

[1]. Aimee J Horsfall, et al. A Bimane-Based Peptide Staple for Combined Helical Induction and Fluorescent Imaging. *ChemBiochem*. 2020 Dec 1;21(23):3423-3432.

Caution: Product has not been fully validated for medical applications. For research use only.

Tel: 609-228-6898

Fax: 609-228-5909

E-mail: tech@MedChemExpress.com

Address: 1 Deer Park Dr, Suite Q, Monmouth Junction, NJ 08852, USA