



# SZABO SCANDIC

Part of Europa Biosite

## Produktinformation



Forschungsprodukte & Biochemikalien



Zellkultur & Verbrauchsmaterial



Diagnostik & molekulare Diagnostik



Laborgeräte & Service

Weitere Information auf den folgenden Seiten!  
See the following pages for more information!



### Lieferung & Zahlungsart

siehe unsere [Liefer- und Versandbedingungen](#)

### Zuschläge

- Mindermengenzuschlag
- Trockeneiszuschlag
- Gefahrgutzuschlag
- Expressversand

### SZABO-SCANDIC HandelsgmbH

Quellenstraße 110, A-1100 Wien

T. +43(0)1 489 3961-0

F. +43(0)1 489 3961-7

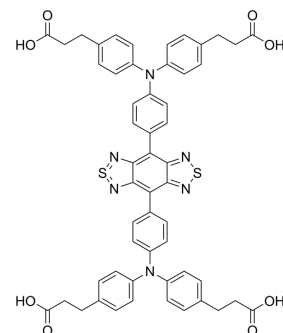
[mail@szabo-scandic.com](mailto:mail@szabo-scandic.com)

[www.szabo-scandic.com](http://www.szabo-scandic.com)

[linkedin.com/company/szaboscandic](https://www.linkedin.com/company/szaboscandic) 

## CH1055

<b>Cat. No.:</b>	HY-D1464		
<b>CAS No.:</b>	1622250-38-7		
<b>Molecular Formula:</b>	C <sub>54</sub> H <sub>44</sub> N <sub>6</sub> O <sub>8</sub> S <sub>2</sub>		
<b>Molecular Weight:</b>	969.09		
<b>Target:</b>	Fluorescent Dye		
<b>Pathway:</b>	Others		
<b>Storage:</b>	Powder	-20°C	3 years
	In solvent	-80°C	6 months
		-20°C	1 month



### SOLVENT & SOLUBILITY

#### In Vitro

DMSO : 16.67 mg/mL (17.20 mM; Need ultrasonic)

Concentration	Solvent	Mass		
		1 mg	5 mg	10 mg
Preparing Stock Solutions	1 mM	1.0319 mL	5.1595 mL	10.3190 mL
	5 mM	0.2064 mL	1.0319 mL	2.0638 mL
	10 mM	0.1032 mL	0.5159 mL	1.0319 mL

Please refer to the solubility information to select the appropriate solvent.

### BIOLOGICAL ACTIVITY

#### Description

CH1055 is a NIR-II fluorophore based on a synthetic 970-Da organic molecule. CH1055 is a rapidly excreted dye (~90% excreted through the kidneys within 24 h). CH1055 also allows targeted molecular imaging of tumors in vivo when conjugated with anti-EGFR Affibody<sup>[1]</sup>.

### REFERENCES

- [1]. Antaris AL, et al. A small-molecule dye for NIR-II imaging. *Nat Mater.* 2016;15(2):235-242.
- [2]. Antaris AL, et al. A small-molecule dye for NIR-II imaging. *Nat Mater.* 2016 Feb;15(2):235-42.

---

**Caution: Product has not been fully validated for medical applications. For research use only.**

Tel: 609-228-6898

Fax: 609-228-5909

E-mail: [tech@MedChemExpress.com](mailto:tech@MedChemExpress.com)

Address: 1 Deer Park Dr, Suite Q, Monmouth Junction, NJ 08852, USA