



SZABO SCANDIC

Part of Europa Biosite

Produktinformation



Forschungsprodukte & Biochemikalien



Zellkultur & Verbrauchsmaterial



Diagnostik & molekulare Diagnostik



Laborgeräte & Service

Weitere Information auf den folgenden Seiten!
See the following pages for more information!



Lieferung & Zahlungsart

siehe unsere [Liefer- und Versandbedingungen](#)

Zuschläge

- Mindermengenzuschlag
- Trockeneiszuschlag
- Gefahrgutzuschlag
- Expressversand

SZABO-SCANDIC HandelsgmbH

Quellenstraße 110, A-1100 Wien

T. +43(0)1 489 3961-0

F. +43(0)1 489 3961-7

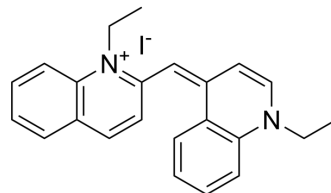
mail@szabo-scandic.com

www.szabo-scandic.com

[linkedin.com/company/szaboscandic](https://www.linkedin.com/company/szaboscandic) 

Ethyl red iodide

Cat. No.:	HY-D1484
CAS No.:	634-21-9
Molecular Formula:	C ₂₃ H ₂₃ IN ₂
Molecular Weight:	454.35
Target:	Fluorescent Dye
Pathway:	Others
Storage:	Please store the product under the recommended conditions in the Certificate of Analysis.



BIOLOGICAL ACTIVITY

Description	Ethyl red (1,1'-Diethyl-2,4'-cyanine) iodide is an azo dye and acid-base indicator ^{[1][2]} .
-------------	--------------------------------------------------------------------------------------------------------

REFERENCES

- [1]. Xu T, et al. All-optical switching characteristics of ethyl red doped polymer film. *Optical Materials*, 2008, 30(9): 1349-1354.
- [2]. Bell S, et al. Ab initio and density functional study of the resonance Raman spectra of Methyl Red, Ethyl Red and their protonated derivatives. *Journal of Raman spectroscopy*, 1998, 29(6): 447-462.

Caution: Product has not been fully validated for medical applications. For research use only.

Tel: 609-228-6898

Fax: 609-228-5909

E-mail: tech@MedChemExpress.com

Address: 1 Deer Park Dr, Suite Q, Monmouth Junction, NJ 08852, USA