



# SZABO SCANDIC

Part of Europa Biosite

## Produktinformation



Forschungsprodukte & Biochemikalien



Zellkultur & Verbrauchsmaterial



Diagnostik & molekulare Diagnostik



Laborgeräte & Service

Weitere Information auf den folgenden Seiten!  
See the following pages for more information!



### Lieferung & Zahlungsart

siehe unsere [Liefer- und Versandbedingungen](#)

### Zuschläge

- Mindermengenzuschlag
- Trockeneiszuschlag
- Gefahrgutzuschlag
- Expressversand

### SZABO-SCANDIC HandelsgmbH

Quellenstraße 110, A-1100 Wien

T. +43(0)1 489 3961-0

F. +43(0)1 489 3961-7

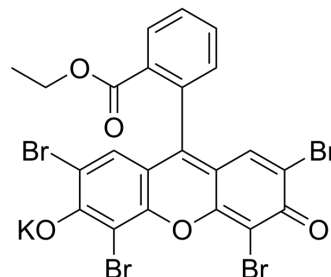
[mail@szabo-scandic.com](mailto:mail@szabo-scandic.com)

[www.szabo-scandic.com](http://www.szabo-scandic.com)

[linkedin.com/company/szaboscandic](https://www.linkedin.com/company/szaboscandic) 

## Ethyl eosin

Cat. No.:	HY-D1489
CAS No.:	6359-05-3
Molecular Formula:	C <sub>22</sub> H <sub>11</sub> Br <sub>4</sub> KO <sub>5</sub>
Molecular Weight:	714.03
Target:	Fluorescent Dye
Pathway:	Others
Storage:	4°C, sealed storage, away from moisture and light * In solvent : -80°C, 6 months; -20°C, 1 month (sealed storage, away from moisture and light)



### SOLVENT & SOLUBILITY

#### In Vitro

DMSO : 12.5 mg/mL (17.51 mM; Need ultrasonic)

Concentration	Mass		
	1 mg	5 mg	10 mg
1 mM	1.4005 mL	7.0025 mL	14.0050 mL
5 mM	0.2801 mL	1.4005 mL	2.8010 mL
10 mM	0.1401 mL	0.7003 mL	1.4005 mL

Please refer to the solubility information to select the appropriate solvent.

### BIOLOGICAL ACTIVITY

#### Description

Ethyl eosin is a fluorescent dye with an absorption peak at 527 nm and an absorption shoulder at 487 nm<sup>[1]</sup>.

### REFERENCES

[1]. Vyas S, et al. Adsorption and fluorescence behaviour of ethyl eosin in surfactant micelles. Tenside Surfactants Detergents, 1984, 21(3): 149-151.

**Caution: Product has not been fully validated for medical applications. For research use only.**

Tel: 609-228-6898

Fax: 609-228-5909

E-mail: tech@MedChemExpress.com

Address: 1 Deer Park Dr, Suite Q, Monmouth Junction, NJ 08852, USA