



# SZABO SCANDIC

Part of Europa Biosite

## Produktinformation



Forschungsprodukte & Biochemikalien



Zellkultur & Verbrauchsmaterial



Diagnostik & molekulare Diagnostik



Laborgeräte & Service

Weitere Information auf den folgenden Seiten!  
See the following pages for more information!



### Lieferung & Zahlungsart

siehe unsere [Liefer- und Versandbedingungen](#)

### Zuschläge

- Mindermengenzuschlag
- Trockeneiszuschlag
- Gefahrgutzuschlag
- Expressversand

### SZABO-SCANDIC HandelsgmbH

Quellenstraße 110, A-1100 Wien

T. +43(0)1 489 3961-0

F. +43(0)1 489 3961-7

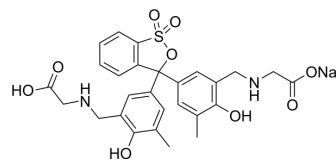
[mail@szabo-scandic.com](mailto:mail@szabo-scandic.com)

[www.szabo-scandic.com](http://www.szabo-scandic.com)

[linkedin.com/company/szaboscandic](https://www.linkedin.com/company/szaboscandic) 

## Glycine cresol red

Cat. No.:	HY-D1536
CAS No.:	77031-64-2
Molecular Formula:	C <sub>27</sub> H <sub>27</sub> N <sub>2</sub> NaO <sub>9</sub> S
Molecular Weight:	578.57
Target:	Fluorescent Dye
Pathway:	Others
Storage:	Please store the product under the recommended conditions in the Certificate of Analysis.



### BIOLOGICAL ACTIVITY

#### Description

Glycine cresol red is a complexometric indicator. Glycine cresol red forms coloured complexes with Al<sup>3+</sup>, Ga<sup>3+</sup> and In<sup>3+</sup> ions in aqueous solutions. Glycine cresol red can be used for the spectrophotometric determination of inorganic ions. Glycine cresol red can be used as a stain in neurohistology<sup>[1][2]</sup>.

### REFERENCES

[1]. Panchenko KI, et al. Ispol'zovanie kompleksonometricheskogo indikatora gliitsinkrezolovogo krasnogo kak krasitelia v neirogistologii [The use of the complexometric indicator glycine cresol red as a stain in neurohistology]. Sud Med Ekspert. 1997 Jan-Mar;40(1):46-7. Russian.

[2]. K. C. Srivastava, et al. A Spectrophotometric Study on Complex Formation of Tungsten (VI) with Glycine Cresol Red. 1975.

**Caution: Product has not been fully validated for medical applications. For research use only.**

Tel: 609-228-6898

Fax: 609-228-5909

E-mail: tech@MedChemExpress.com

Address: 1 Deer Park Dr, Suite Q, Monmouth Junction, NJ 08852, USA