



# SZABO SCANDIC

Part of Europa Biosite

## Produktinformation



Forschungsprodukte & Biochemikalien



Zellkultur & Verbrauchsmaterial



Diagnostik & molekulare Diagnostik



Laborgeräte & Service

Weitere Information auf den folgenden Seiten!  
See the following pages for more information!



### Lieferung & Zahlungsart

siehe unsere [Liefer- und Versandbedingungen](#)

### Zuschläge

- Mindermengenzuschlag
- Trockeneiszuschlag
- Gefahrgutzuschlag
- Expressversand

### SZABO-SCANDIC HandelsgmbH

Quellenstraße 110, A-1100 Wien

T. +43(0)1 489 3961-0

F. +43(0)1 489 3961-7

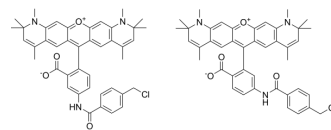
[mail@szabo-scandic.com](mailto:mail@szabo-scandic.com)

[www.szabo-scandic.com](http://www.szabo-scandic.com)

[linkedin.com/company/szaboscandic](https://www.linkedin.com/company/szaboscandic) 

## CytoTrace Red CMTPIX

|                           |   |
|---------------------------|---|
| <b>Cat. No.:</b>          | HY-D1562  |
| <b>Molecular Formula:</b> | C <sub>84</sub> H <sub>80</sub> Cl <sub>2</sub> N <sub>6</sub> O <sub>8</sub>             |
| <b>Molecular Weight:</b>  | 1372.48   |
| <b>Target:</b>            | Fluorescent Dye   |
| <b>Pathway:</b>           | Others  |
| <b>Storage:</b>           | Please store the product under the recommended conditions in the Certificate of Analysis. |



### BIOLOGICAL ACTIVITY

|                    |  |
|--------------------|--|
| <b>Description</b> | CytoTrace Red CMTPIX is a cell permeable long-term cell tracer (Ex=577 nm, Em=602 nm) <sup>[1]</sup> .   |
| <b>In Vitro</b>    | <p>Guidelines (Following is our recommended protocol. This protocol only provides a guideline, and should be modified according to your specific needs)<sup>[1]</sup>.</p> <ol style="list-style-type: none"> <li>1. Prepare the working solution of 5 μM, and incubate with cells for 30 min, protected from light.</li> <li>2. Collect images by confocal microscopy with an excitation/emission wavelength of 577/602 nm.</li> </ol> <p>MCE has not independently confirmed the accuracy of these methods. They are for reference only.</p> |

### REFERENCES

[1]. Bernd R Stab 2nd, et al. Mitochondrial Functional Changes Characterization in Young and Senescent Human Adipose Derived MSCs. Front Aging Neurosci. 2016 Dec 15;8:299.

**Caution: Product has not been fully validated for medical applications. For research use only.**

Tel: 609-228-6898

Fax: 609-228-5909

E-mail: tech@MedChemExpress.com

Address: 1 Deer Park Dr, Suite Q, Monmouth Junction, NJ 08852, USA