



# SZABO SCANDIC

Part of Europa Biosite

## Produktinformation



Forschungsprodukte & Biochemikalien



Zellkultur & Verbrauchsmaterial



Diagnostik & molekulare Diagnostik



Laborgeräte & Service

Weitere Information auf den folgenden Seiten!  
See the following pages for more information!



### Lieferung & Zahlungsart

siehe unsere [Liefer- und Versandbedingungen](#)

### Zuschläge

- Mindermengenzuschlag
- Trockeneiszuschlag
- Gefahrgutzuschlag
- Expressversand

### SZABO-SCANDIC HandelsgmbH

Quellenstraße 110, A-1100 Wien

T. +43(0)1 489 3961-0

F. +43(0)1 489 3961-7

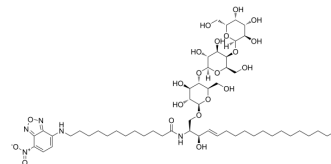
[mail@szabo-scandic.com](mailto:mail@szabo-scandic.com)

[www.szabo-scandic.com](http://www.szabo-scandic.com)

[linkedin.com/company/szaboscandic](https://www.linkedin.com/company/szaboscandic) 

## C12 NBD Globotriaosylceramide

<b>Cat. No.:</b>	HY-D1579
<b>CAS No.:</b>	2692623-26-8
<b>Molecular Formula:</b>	C <sub>54</sub> H <sub>91</sub> N <sub>5</sub> O <sub>21</sub>
<b>Molecular Weight:</b>	1146.32
<b>Target:</b>	Fluorescent Dye
<b>Pathway:</b>	Others
<b>Storage:</b>	Please store the product under the recommended conditions in the Certificate of Analysis.



### BIOLOGICAL ACTIVITY

<b>Description</b>	C12 NBD galactosylceramide is a biologically active derivative of galactosylceramide that is tagged with a fluorescent C12 nitrobenzoxadiazole (C12 NBD) group. C12 NBD galactosylceramide has been used to detect ceramide trihexoside <sup>[1]</sup> .
<b>In Vitro</b>	C12 NBD globotriaosylceramide accumulates in human umbilical vascular endothelial cells (HUVECs) treated with the $\alpha$ -galactosidase A inhibitor in a concentration-dependent manner <sup>[2]</sup> . MCE has not independently confirmed the accuracy of these methods. They are for reference only.

### REFERENCES

- [1]. Kassiani Kytidou, et al. *Nicotiana benthamiana*  $\alpha$ -galactosidase A1.1 can functionally complement human  $\alpha$ -galactosidase A deficiency associated with Fabry disease. *J Biol Chem.* 2018 Jun 29;293(26):10042-10058.
- [2]. Janet Hsu, et al. Enhanced endothelial delivery and biochemical effects of  $\alpha$ -galactosidase by ICAM-1-targeted nanocarriers for Fabry disease. *J Control Release.* 2011 Feb 10;149(3):323-31.

**Caution: Product has not been fully validated for medical applications. For research use only.**

Tel: 609-228-6898

Fax: 609-228-5909

E-mail: tech@MedChemExpress.com

Address: 1 Deer Park Dr, Suite Q, Monmouth Junction, NJ 08852, USA