



# SZABO SCANDIC

Part of Europa Biosite

## Produktinformation



Forschungsprodukte & Biochemikalien



Zellkultur & Verbrauchsmaterial



Diagnostik & molekulare Diagnostik



Laborgeräte & Service

Weitere Information auf den folgenden Seiten!  
See the following pages for more information!



### Lieferung & Zahlungsart

siehe unsere [Liefer- und Versandbedingungen](#)

### Zuschläge

- Mindermengenzuschlag
- Trockeneiszuschlag
- Gefahrgutzuschlag
- Expressversand

### SZABO-SCANDIC HandelsgmbH

Quellenstraße 110, A-1100 Wien

T. +43(0)1 489 3961-0

F. +43(0)1 489 3961-7

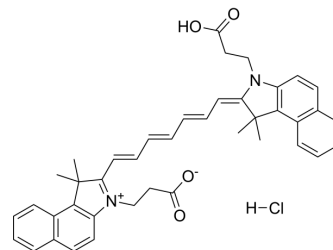
[mail@szabo-scandic.com](mailto:mail@szabo-scandic.com)

[www.szabo-scandic.com](http://www.szabo-scandic.com)

[linkedin.com/company/szaboscandic](https://www.linkedin.com/company/szaboscandic) 

## Cypate hydrochloride

<b>Cat. No.:</b>	HY-D1719A
<b>Molecular Formula:</b>	C <sub>41</sub> H <sub>41</sub> ClN <sub>2</sub> O <sub>4</sub>
<b>Molecular Weight:</b>	661.23
<b>Target:</b>	Fluorescent Dye
<b>Pathway:</b>	Others
<b>Storage:</b>	4°C, sealed storage, away from moisture * In solvent : -80°C, 6 months; -20°C, 1 month (sealed storage, away from moisture)



### SOLVENT & SOLUBILITY

#### In Vitro

DMSO : 12.5 mg/mL (18.90 mM); ultrasonic and warming and heat to 60°C  
H<sub>2</sub>O : < 0.1 mg/mL (ultrasonic;warming;heat to 60°C) (insoluble)

Preparing Stock Solutions	Solvent Concentration	Mass		
		1 mg	5 mg	10 mg
	1 mM	1.5123 mL	7.5617 mL	15.1233 mL
	5 mM	0.3025 mL	1.5123 mL	3.0247 mL
	10 mM	0.1512 mL	0.7562 mL	1.5123 mL

Please refer to the solubility information to select the appropriate solvent.

#### In Vivo

- Add each solvent one by one: 10% DMSO >> 40% PEG300 >> 5% Tween-80 >> 45% saline  
Solubility: ≥ 1.25 mg/mL (1.89 mM); Clear solution
- Add each solvent one by one: 10% DMSO >> 90% (20% SBE-β-CD in saline)  
Solubility: 1.25 mg/mL (1.89 mM); Suspended solution; Need ultrasonic

### BIOLOGICAL ACTIVITY

#### Description

Cypate is a near-infrared fluorescent dye that belongs to the family of photosensitizers. Cypate has high photostability and optical properties, and is often used in near-infrared optical imaging, as well as optical imaging, tumor marking, and drug delivery. In addition, Cypate is also used as a molecular probe and combined with targeting molecules (such as CBT or small interfering RNA) to achieve efficient detection and imaging of specific cells or tissues<sup>[1][2]</sup>.

#### In Vitro

In the study, Cypate coupled upconversion nanoparticles (UCNP-cy) loaded with small interfering RNA gene with anti-heat shock protein 70 (UCNP-cy-siRNA) resulted in targeted cell damage and anti-tumor effects<sup>[1]</sup>. Cypate can also be coupled to CBT (Cysteine-containing Peptide Backbone Tag), which can be used to track, label and image specific biomolecules or cells. For example, Cypate-CBT, as a near-infrared photoacoustic (PA) probe, can be used to specifically image and track cathepsin B (CTSB) activity in CTSB-overexpressing cells and tumors in real time. After Cypate-

---

CBT entered CTSB overexpressing cells, it underwent glutathione reduction and CTSB cleavage to generate cypate nanoparticles Cypate-CBT-NPs, which enhanced the intensity and retention time of PA signal at tumor sites. Cypate-CBT has the potential to be used as an effective PA imaging agent for clinical diagnosis of early cancer<sup>[2]</sup>.  
MCE has not independently confirmed the accuracy of these methods. They are for reference only.

## REFERENCES

---

- [1]. Wang L, et al. Cypate-conjugated porous upconversion nanocomposites for programmed delivery of heat shock protein 70 small interfering RNA for gene silencing and photothermal ablation[J]. *Advanced Functional Materials*, 2016, 26(20): 3480-3489.
- [2]. Wang C, et al. Cathepsin B-Initiated Cypate Nanoparticle Formation for Tumor Photoacoustic Imaging. *Angew Chem Int Ed Engl*. 2022 Jan 26;61(5):e202114766.
- 

**Caution: Product has not been fully validated for medical applications. For research use only.**

Tel: 609-228-6898

Fax: 609-228-5909

E-mail: [tech@MedChemExpress.com](mailto:tech@MedChemExpress.com)

Address: 1 Deer Park Dr, Suite Q, Monmouth Junction, NJ 08852, USA