



SZABO SCANDIC

Part of Europa Biosite

Produktinformation



Forschungsprodukte & Biochemikalien



Zellkultur & Verbrauchsmaterial



Diagnostik & molekulare Diagnostik



Laborgeräte & Service

Weitere Information auf den folgenden Seiten!
See the following pages for more information!



Lieferung & Zahlungsart

siehe unsere [Liefer- und Versandbedingungen](#)

Zuschläge

- Mindermengenzuschlag
- Trockeneiszuschlag
- Gefahrgutzuschlag
- Expressversand

SZABO-SCANDIC HandelsgmbH

Quellenstraße 110, A-1100 Wien

T. +43(0)1 489 3961-0

F. +43(0)1 489 3961-7

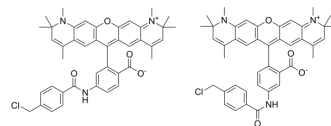
mail@szabo-scandic.com

www.szabo-scandic.com

[linkedin.com/company/szaboscandic](https://www.linkedin.com/company/szaboscandic) 

CellTracker Red CMTPX

Cat. No.:	HY-D1727
Molecular Formula:	C ₄₂ H ₄₀ ClN ₃ O ₄
Molecular Weight:	686.24
Target:	Fluorescent Dye
Pathway:	Others
Storage:	Please store the product under the recommended conditions in the Certificate of Analysis.



BIOLOGICAL ACTIVITY

Description	CellTracker Red CMTPX is a cell-permeable fluorescent dye that can be used as a cell tracer for monitoring cell movement and location (Ex/Em=586/614 nm) ^[1] .
In Vitro	<p>Guidelines (Following is our recommended protocol. This protocol only provides a guideline, and should be modified according to your specific needs).</p> <p>Fixation and staining of self-assembled spheroids^[1]:</p> <ol style="list-style-type: none"> 1. Resuspended cells are stained with CellTracker Red CMTPX and allowed to self-assemble into spheroids before aggregation. 2. Cell aggregates are fixed in 4% paraformaldehyde/PBS for 30 min with gentle inversion, then washing cells in PBS for 3 times and stained with 100 ng/mL Hoechst dye overnight prior to imaging. <p>MCE has not independently confirmed the accuracy of these methods. They are for reference only.</p>

REFERENCES

[1]. Van Pel DM, et al. Modelling glioma invasion using 3D bioprinting and scaffold-free 3D culture. J Cell Commun Signal. 2018 Dec;12(4):723-730.

Caution: Product has not been fully validated for medical applications. For research use only.

Tel: 609-228-6898

Fax: 609-228-5909

E-mail: tech@MedChemExpress.com

Address: 1 Deer Park Dr, Suite Q, Monmouth Junction, NJ 08852, USA