



# SZABO SCANDIC

Part of Europa Biosite

## Produktinformation



Forschungsprodukte & Biochemikalien



Zellkultur & Verbrauchsmaterial



Diagnostik & molekulare Diagnostik



Laborgeräte & Service

Weitere Information auf den folgenden Seiten!  
See the following pages for more information!



### Lieferung & Zahlungsart

siehe unsere [Liefer- und Versandbedingungen](#)

### Zuschläge

- Mindermengenzuschlag
- Trockeneiszuschlag
- Gefahrgutzuschlag
- Expressversand

### SZABO-SCANDIC HandelsgmbH

Quellenstraße 110, A-1100 Wien

T. +43(0)1 489 3961-0

F. +43(0)1 489 3961-7

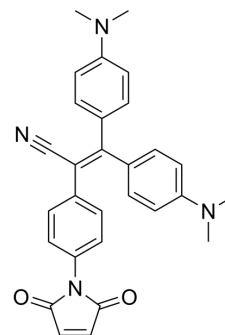
[mail@szabo-scandic.com](mailto:mail@szabo-scandic.com)

[www.szabo-scandic.com](http://www.szabo-scandic.com)

[linkedin.com/company/szaboscandic](https://www.linkedin.com/company/szaboscandic) 

## NTPAN-MI

Cat. No.:	HY-D1781
CAS No.:	2411398-95-1
Molecular Formula:	C <sub>29</sub> H <sub>26</sub> N <sub>4</sub> O <sub>2</sub>
Molecular Weight:	462.54
Target:	Fluorescent Dye
Pathway:	Others
Storage:	-20°C, protect from light * In solvent : -80°C, 6 months; -20°C, 1 month (protect from light)



## BIOLOGICAL ACTIVITY

### Description

NTPAN-MI is a fluorescent probe. NTPAN-MI is selectively activated upon labeling unfolded proteins with exposed thiols, thereby reporting on the extent of proteostasis<sup>[1]</sup>.

## REFERENCES

[1]. Owyong TC, et al. A Molecular Chameleon for Mapping Subcellular Polarity in an Unfolded Proteome Environment. *Angew Chem Int Ed Engl.* 2020 Jun 15;59(25):10129-10135.

**Caution: Product has not been fully validated for medical applications. For research use only.**

Tel: 609-228-6898

Fax: 609-228-5909

E-mail: tech@MedChemExpress.com

Address: 1 Deer Park Dr, Suite Q, Monmouth Junction, NJ 08852, USA