



# SZABO SCANDIC

Part of Europa Biosite

## Produktinformation



Forschungsprodukte & Biochemikalien



Zellkultur & Verbrauchsmaterial



Diagnostik & molekulare Diagnostik



Laborgeräte & Service

Weitere Information auf den folgenden Seiten!  
See the following pages for more information!



### Lieferung & Zahlungsart

siehe unsere [Liefer- und Versandbedingungen](#)

### Zuschläge

- Mindermengenzuschlag
- Trockeneiszuschlag
- Gefahrgutzuschlag
- Expressversand

### SZABO-SCANDIC HandelsgmbH

Quellenstraße 110, A-1100 Wien

T. +43(0)1 489 3961-0

F. +43(0)1 489 3961-7

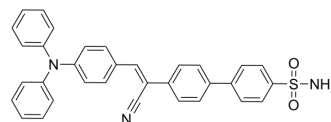
[mail@szabo-scandic.com](mailto:mail@szabo-scandic.com)

[www.szabo-scandic.com](http://www.szabo-scandic.com)

[linkedin.com/company/szaboscandic](https://www.linkedin.com/company/szaboscandic) 

## AIE-GA

Cat. No.:	HY-D2297
CAS No.:	2653341-16-1
Molecular Formula:	C <sub>33</sub> H <sub>25</sub> N <sub>3</sub> O <sub>2</sub> S
Molecular Weight:	527.64
Target:	Fluorescent Dye
Pathway:	Others
Storage:	Please store the product under the recommended conditions in the Certificate of Analysis.



## BIOLOGICAL ACTIVITY

Description	AIE-GA is a Golgi apparatus (GA) fluorescent probe (green channel: $\lambda_{ex}$ = 405 nm, $\lambda_{em}$ = 500-700 nm). AIE-GA has a favourable binding ability to interact with COX-2. AIE-GA binds to the cyclooxygenase catalytic site of COX-2 <sup>[1]</sup> .
In Vitro	For Golgi apparatus staining, cells were first incubated with ACQ-GA (2 $\mu$ M) and AIE-GA (2 $\mu$ M), respectively. Then Golgi Tracker Red (333 $\mu$ g/mL) was added and incubated at 37 °C for 30 min, and the medium was removed and the cells were rinsed with phosphate buffered saline (PBS) three times and then imaged under a confocal microscope <sup>[1]</sup> . Loss in fluorescence of HeLa cells stained with ACQ-GA (2 $\mu$ M), AIE-GA (2 $\mu$ M) and Golgi Tracker Red (333 $\mu$ g/mL) with increasing the number of scans of laser irradiation <sup>[1]</sup> . MCE has not independently confirmed the accuracy of these methods. They are for reference only.

## REFERENCES

[1]. Xiao P, et al. An aggregation-induced emission platform for efficient Golgi apparatus and endoplasmic reticulum specific imaging. Chem Sci. 2021 Oct 5;12(41):13949-13957.

**Caution: Product has not been fully validated for medical applications. For research use only.**

Tel: 609-228-6898

Fax: 609-228-5909

E-mail: tech@MedChemExpress.com

Address: 1 Deer Park Dr, Suite Q, Monmouth Junction, NJ 08852, USA