



# SZABO SCANDIC

Part of Europa Biosite

## Produktinformation



Forschungsprodukte & Biochemikalien



Zellkultur & Verbrauchsmaterial



Diagnostik & molekulare Diagnostik



Laborgeräte & Service

Weitere Information auf den folgenden Seiten!  
See the following pages for more information!



### Lieferung & Zahlungsart

siehe unsere [Liefer- und Versandbedingungen](#)

### Zuschläge

- Mindermengenzuschlag
- Trockeneiszuschlag
- Gefahrgutzuschlag
- Expressversand

### SZABO-SCANDIC HandelsgmbH

Quellenstraße 110, A-1100 Wien

T. +43(0)1 489 3961-0

F. +43(0)1 489 3961-7

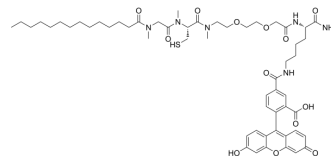
[mail@szabo-scandic.com](mailto:mail@szabo-scandic.com)

[www.szabo-scandic.com](http://www.szabo-scandic.com)

[linkedin.com/company/szaboscandic](https://www.linkedin.com/company/szaboscandic) 

## mgc(3Me)FL

Cat. No.:	HY-D2301
Molecular Formula:	C <sub>55</sub> H <sub>76</sub> N <sub>6</sub> O <sub>13</sub> S
Molecular Weight:	1061.29
Target:	Fluorescent Dye
Pathway:	Others
Storage:	Please store the product under the recommended conditions in the Certificate of Analysis.



### BIOLOGICAL ACTIVITY

#### Description

mgc(3Me)FL is the active fluorescent form of mgc(3Me)FDA (HY-D2300) after hydrolysis in cells. mgc(3Me)FL subcellularly localizes to the Golgi apparatus and is a visualized Golgi probe. mgc(3Me)FL also binds to the outer leaflet of the plasma membrane (PM), causing the plasma membrane to fluoresce<sup>[1]</sup>.

### REFERENCES

[1]. Sawada S, et al. Palmitoylation-Dependent Small-Molecule Fluorescent Probes for Live-Cell Golgi Imaging. ACS Chem Biol. 2023 May 19;18(5):1047-1053.

**Caution: Product has not been fully validated for medical applications. For research use only.**

Tel: 609-228-6898

Fax: 609-228-5909

E-mail: tech@MedChemExpress.com

Address: 1 Deer Park Dr, Suite Q, Monmouth Junction, NJ 08852, USA