



SZABO SCANDIC

Part of Europa Biosite

Produktinformation



Forschungsprodukte & Biochemikalien



Zellkultur & Verbrauchsmaterial



Diagnostik & molekulare Diagnostik



Laborgeräte & Service

Weitere Information auf den folgenden Seiten!
See the following pages for more information!



Lieferung & Zahlungsart

siehe unsere [Liefer- und Versandbedingungen](#)

Zuschläge

- Mindermengenzuschlag
- Trockeneiszuschlag
- Gefahrgutzuschlag
- Expressversand

SZABO-SCANDIC HandelsgmbH

Quellenstraße 110, A-1100 Wien

T. +43(0)1 489 3961-0

F. +43(0)1 489 3961-7

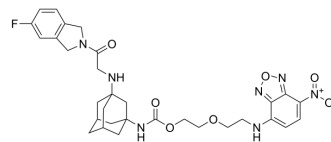
mail@szabo-scandic.com

www.szabo-scandic.com

[linkedin.com/company/szaboscandic](https://www.linkedin.com/company/szaboscandic) 

DPP-8/9 probe-1

Cat. No.:	HY-D2327
CAS No.:	3020859-80-4
Molecular Formula:	C ₃₁ H ₃₆ FN ₇ O ₇
Molecular Weight:	637.66
Target:	Dipeptidyl Peptidase
Pathway:	Metabolic Enzyme/Protease
Storage:	Please store the product under the recommended conditions in the Certificate of Analysis.



BIOLOGICAL ACTIVITY

Description	DPP-8/9 probe-1 (compound 20) is a fluorescent probe targeting Dipeptidyl Peptidase DPP8/9, which can be selectively labeled and visualized in vitro by fluorescence microscopy Active DPP8/9. DPP-8/9 probe-1 contains a nitrobenzoxadiazole (NBD) tag and has high affinity and selectivity for DPP8/9 over related S9 family members (IC ₅₀ of 210 nM and 15 nM, respectively).[9][1].										
IC₅₀ & Target	DPP-8 210 nM (IC ₅₀ , [1])	DPP-9 15 nM (IC ₅₀ , [1])	DPP-4 .44 μM (IC ₅₀ , [1])								
In Vitro	<p>DPP-8/9 probe-1 (compound 20) (10 μM; 30 min) significantly stains and visualizes DPP-8/9 in THP cells^[1]. MCE has not independently confirmed the accuracy of these methods. They are for reference only.</p> <p>Immunofluorescence^[1]</p> <table border="1"> <tr> <td>Cell Line:</td> <td>THP-1 monocytes</td> </tr> <tr> <td>Concentration:</td> <td>0.5 μM, 1 μM, 2 μM, 10 μM</td> </tr> <tr> <td>Incubation Time:</td> <td>30 min</td> </tr> <tr> <td>Result:</td> <td>Lower concentrations (0.5 μM, 1 μM and 2 μM) can not be sufficient for in-cell staining Sta</td> </tr> </table>			Cell Line:	THP-1 monocytes	Concentration:	0.5 μM, 1 μM, 2 μM, 10 μM	Incubation Time:	30 min	Result:	Lower concentrations (0.5 μM, 1 μM and 2 μM) can not be sufficient for in-cell staining Sta
Cell Line:	THP-1 monocytes										
Concentration:	0.5 μM, 1 μM, 2 μM, 10 μM										
Incubation Time:	30 min										
Result:	Lower concentrations (0.5 μM, 1 μM and 2 μM) can not be sufficient for in-cell staining Sta										

REFERENCES

[1]. Espadinha M, et al. Active site-directed probes targeting dipeptidyl peptidases 8 and 9. Eur J Med Chem. 2024 Apr 15;270:116389.

Caution: Product has not been fully validated for medical applications. For research use only.

Tel: 609-228-6898

Fax: 609-228-5909

E-mail: tech@MedChemExpress.com

Address: 1 Deer Park Dr, Suite Q, Monmouth Junction, NJ 08852, USA