



SZABO SCANDIC

Part of Europa Biosite

Produktinformation



Forschungsprodukte & Biochemikalien



Zellkultur & Verbrauchsmaterial



Diagnostik & molekulare Diagnostik



Laborgeräte & Service

Weitere Information auf den folgenden Seiten!
See the following pages for more information!



Lieferung & Zahlungsart

siehe unsere [Liefer- und Versandbedingungen](#)

Zuschläge

- Mindermengenzuschlag
- Trockeneiszuschlag
- Gefahrgutzuschlag
- Expressversand

SZABO-SCANDIC HandelsgmbH

Quellenstraße 110, A-1100 Wien

T. +43(0)1 489 3961-0

F. +43(0)1 489 3961-7

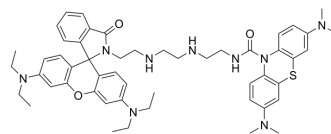
mail@szabo-scandic.com

www.szabo-scandic.com

[linkedin.com/company/szaboscandic](https://www.linkedin.com/company/szaboscandic) 

RhFNMB

Cat. No.:	HY-D2333
Molecular Formula:	C ₅₁ H ₆₃ N ₉ O ₃ S
Molecular Weight:	882.17
Target:	Fluorescent Dye
Pathway:	Others
Storage:	Please store the product under the recommended conditions in the Certificate of Analysis.



BIOLOGICAL ACTIVITY

Description	RhFNMB is a dualchannel/localization single-molecule fluorescence probe for ATP and HOCl, with independent fluorescence responses in the light red channel with ATP ($\lambda_{ex} = 520 \text{ nm}$, $\lambda_{em} = 586 \text{ nm}$) and deep red channel with HOCl ($\lambda_{ex} = 620 \text{ nm}$, $\lambda_{em} = 688 \text{ nm}$) ^[1] .
In Vitro	<p>General Protocol</p> <ol style="list-style-type: none"> Preparation of RhFNMB working solution <ol style="list-style-type: none"> Prepare a 10 mM stock solution Prepare a 5-10 μM RhFNMB working solution <p>Note: Please adjust the concentration of RhFNMB working solution according to the actual situation.</p> Cell staining <ol style="list-style-type: none"> Suspension cells (6-well plate) <ol style="list-style-type: none"> Centrifuge at 1000 g at 4°C for 3-5 min and then discard the supernatant. Wash twice with PBS, 5 min each time. The cell density is $1 \times 10^6/\text{mL}$. Add 1 mL of working solution, and then incubate at room temperature for 1 h. Centrifuge at 400 g at 4°C for 3-4 min and then discard the supernatant. Wash twice with PBS, 5 min each time. Resuspend cells with serum-free cell culture medium or PBS. Observation by fluorescence microscopy or flow cytometry. Adherent cells <ol style="list-style-type: none"> Culture adherent cells on sterile coverslips. Remove the coverslip from the medium and aspirate excess medium. Add 100 μL of working solution, gently shake it to completely cover the cells, and then incubate at room temperature for 1 h. Wash twice with medium, 5 min each time. Observation by fluorescence microscopy or flow cytometry. <p>Precautions</p> <ol style="list-style-type: none"> Please adjust the concentration of RhFNMB working solution according to the actual situation. This product is only for R&D use, not for drug, household, or others. For your safety and health, please wear a lab coat and disposable gloves to operate. <p>MCE has not independently confirmed the accuracy of these methods. They are for reference only.</p>

REFERENCES

Caution: Product has not been fully validated for medical applications. For research use only.

Tel: 609-228-6898

Fax: 609-228-5909

E-mail: tech@MedChemExpress.com

Address: 1 Deer Park Dr, Suite Q, Monmouth Junction, NJ 08852, USA